

THOMPSON TRACTOR 2024 PRODUCT LINE



www.thompsontractor.com

Thompson 

TABLE OF CONTENTS

MACHINES

Backhoe Loaders	4
Skid Steer Loaders	4
Compact Track Loaders	4
Telehandlers	4
Wheel Loaders	4
Millyard Arrangements	7
Steel Mill Arrangements	7
Waste/Scrap Handling Arrangements	7
Block Handler Arrangements	7
Wheel Tractor Scrapers	7
Articulated Trucks	7
Off-Highway Trucks	8
Excavators	8
Forest Machines	10
Long Reach Excavators	10
Wheel Excavators	10
Wheel Material Handlers	10
Track Loaders	10
Compactors	10
Dozers	11
Motor Graders	11
Pipelayers	11

CAT® PAVING PRODUCTS

Asphalt Paving Machines	12
Screeds	12
Compactors	12
Reclaimers	14
Cold Planers	14

SPECIALTY PRODUCTS

Weiler Paving Products	15
Weiler Forestry Products	17
Astec Products	18
I-Rock Products	18

Mobile Track Solutions	19
SB Manufacturing Sweepers	19
Screen Machine Products	20
Road Widener Products	21

WORK TOOL ATTACHMENTS

CAT POWER SYSTEMS

Diesel Generator Sets	26
Gas Generator Sets	27
Industrial Diesel Engines	28
Gas Compression Engines	29
Electric Power Renewable Hybrid Solutions	29
Mobile Generator Sets	30
Electrical Systems	30
Electrical Systems (50 Hz)	30
Electrical Systems (60 Hz)	31
Industrial Power Systems	31
Fire Pumps	33
Oil & Gas	33
Marine Engines	35
Berg Marine Drives	35

For more complete information on Cat products and other product line dealer services and industry solutions, please consult the experts at our dealership or visit us on the web at www.thompsontractor.com.

© 2024 Thompson Tractor. All Rights Reserved. CAT, CATERPILLAR, LET'S DO THE WORK, their respective logos, "Caterpillar Corporate Yellow", the "Power Edge" and Cat "Modern Hex" trade dress as well as corporate and product identity used herein, are trademarks of Caterpillar and may not be used without permission. Other trademarks and tradenames are the property of their respective holders. Materials and specifications are subject to change without notice. Featured machines in photos may include additional equipment. See our dealership for available options and features.



MACHINES

Backhoe Loaders



Center Pivot

	NET POWER		MAX OPERATING WEIGHT		DIG DEPTH	
415	70 hp	52 kW	24,251 lb	11000 kg	14'	4277 mm
416	86 hp	64 kW	24,251 lb	11000 kg	14'	4277 mm
420	92 hp	68 kW	24,251 lb	11000 kg	14'	4278 mm
420 XE	92 hp	68 kW	24,251 lb	11000 kg	14'	4278 mm
430	107 hp	80 kW	24,251 lb	11000 kg	15.1'	4612 mm
440	104 hp	78 kW	29,321 lb	13300 kg	15.5'	4718 mm
450	131 hp	98 kW	29,321 lb	13300 kg	17'	5185 mm

Side Shift

428	70 hp	52 kW	24,251 lb	11000 kg	15.7'	4778 mm
432	92 hp	68 kW	24,251 lb	11000 kg	15.7'	4778 mm
434	92 hp	68 kW	25,353 lb	11500 kg	15.8'	4827 mm



Skid Steer Loaders

	NET POWER		RATED OPERATING CAPACITY		OPERATING WEIGHT	
226D3	65.8 hp	49.1 kW	1,550 lb	705 kg	5,849 lb	2653 kg
232D3	65.8 hp	49.1 kW	1,900 lb	865 kg	6,514 lb	2955 kg
236D3	73.2 hp	54.6 kW	1,800 lb	820 kg	6,567 lb	2979 kg
242D3	73.2 hp	54.6 kW	2,200 lb	1000 kg	7,138 lb	3238 kg
246D3	72.9 hp	54.4 kW	2,200 lb	1000 kg	7,478 lb	3392 kg
262D3	72.9 hp	54.4 kW	2,700 lb	1225 kg	8,296 lb	3763 kg
272D3	95 hp	71 kW	3,450 lb	1570 kg	9,133 lb	4143 kg
272D3 XE	106 hp	79 kW	3,700 lb	1680 kg	9,573 lb	4342 kg



Compact Track Loaders

	NET POWER		OPERATING WEIGHT		RATED OPERATING CAPACITY		GROUND PRESSURE	
239D3	65.8 hp	49.1 kW	7,434 lb	3372 kg	1,530 lb	695 kg	5.4 psi	37.3 kPa
249D3	65.8 hp	49.1 kW	7,831 lb	3552 kg	1,740 lb	790 kg	4.7 psi	32.2 kPa
255	74.3 hp	55.4 kW	9,628 lb	4367 kg	2,499 lb	1134 kg	4.6 psi	31.9 kPa
265	74.3 hp	55.4 kW	10,492 lb	4759 kg	2,822 lb	1280 kg	4.6 psi	31.9 kPa
299D3	95 hp	71 kW	11,464 lb	5200 kg	3,480 lb	1580 kg	5.3 psi	36.4 kPa
299D3 XE	106 hp	79 kW	11,756 lb	5333 kg	3,560 lb	1620 kg	5.4 psi	37.3 kPa

Telehandlers



	ENGINE MODEL	RATED CAPACITY		LIFT HEIGHT	
TH255C	TD 2.9L L4	5,500 lb	2500 kg	18.37'	5.6 m
TL642	3.6L	6,500 lb	2948 kg	42'	12.8 m
TL943	3.6L	9,000 lb	4082 kg	43'	13.1 m
TL1055	3.6L	10,000 lb	4536 kg	54.9'	16.7 m
TL1255	3.6L	12,000 lb	5443 kg	54.9'	16.7 m



Wheel Loaders

Compact

	GROSS POWER		OPERATING WEIGHT		BUCKET CAPACITY	
903D	42 hp	31 kW	9,414 lb	4270 kg	0.8-1.3 yd ³	0.6-1 m ³
906	74.7 hp	55.7 kW	12,628 lb	5730 kg	1.0-2 yd ³	0.75-1.5 m ³
907	74.7 hp	55.7 kW	12,765 lb	5792 kg	1.0-2 yd ³	0.75-1.5 m ³
908	74.7 hp	55.7 kW	14,617 lb	6632 kg	1.0-2 yd ³	0.75-1.5 m ³
910	110 hp	82 kW	18,102 lb	8109 kg	1.7-4.6 yd ³	1.3-3.5 m ³
914	110 hp	82 kW	19,103 lb	8668 kg	1.7-4.6 yd ³	1.3-3.5 m ³
920	121 hp	90 kW	21,742 lb	9865 kg	1.7-4.6 yd ³	1.3-3.5 m ³

Small

	GROSS POWER		OPERATING WEIGHT		BUCKET CAPACITY	
926M	168 hp	125 kW	28,193 lb	12789 kg	2.5-6.5 yd ³	1.9-5 m ³
930M	168 hp	125 kW	31,382 lb	14235 kg	2.7-6.5 yd ³	2.1-5 m ³
938M	188 hp	140 kW	35,778 lb	16229 kg	3.2-6.5 yd ³	2.5-5 m ³

Medium

	GROSS POWER (ISO 14396)		OPERATING WEIGHT		BUCKET CAPACITY	
950 GC	227 hp	169 kW	42,040 lb	19069 kg	3.5-5.75 yd ³	2.7-4.4 m ³
950	249 hp	186 kW	42,461 lb	19260 kg	3.3-13.0 yd ³	2.5-9.9 m ³
962	269 hp	201 kW	44,469 lb	20171 kg	3.3-13.0 yd ³	2.5-9.9 m ³
966 GC	294 hp	219 kW	48,018 lb	21781 kg	4.25-9.25 yd ³	3.2-7.1 m ³
966	321 hp	239 kW	51,124 lb	23196 kg	3.75-15.5 yd ³	2.8-11.9 m ³
966 XE	321 hp	239 kW	51,124 lb	23196 kg	3.75-15.5 yd ³	2.8-11.9 m ³
972	339 hp	253 kW	54,858 lb	24 890 kg	3.75-18.25 yd ³	2.8-14.0 m ³
972 XE	339 hp	253 kW	54,858 lb	24890 kg	3.75-18.25 yd ³	2.8-14.0 m ³
980	420 hp	313 kW	66,877 lb	30344 kg	5.25-19.0 yd ³	4.0-14.5 m ³
980 XE	420 hp	313 kW	66,877 lb	30344 kg	5.25-19.0 yd ³	4.0-14.5 m ³
982	432 hp	322 kW	78,264 lb	35510 kg	6.25-22.5 yd ³	4.8-17.2 m ³
982 XE	432 hp	322 kW	78,264 lb	35510 kg	6.25-22.5 yd ³	4.8-17.2 m ³

Large

	GROSS POWER		OPERATING WEIGHT		BUCKET CAPACITY	
986	373 hp	278 kW	97,785 lb	44355 kg	6.5-13.5 yd ³	5-10.3 m ³
988 GC	456 hp	340 kW	112,830 lb	51179 kg	8.3-10 yd ³	6.4-7.6 m ³
988K	588 hp	439 kW	112,574 lb	51062 kg	6.2-17 yd ³	4.7-13 m ³
988K XE	588 hp	439 kW	116,362 lb	52781 kg	6.2-17 yd ³	4.7-13 m ³
990	766 hp	571 kW	178,517 lb	80974 kg	11.25-13.0 yd ³	8.6-10.0 m ³
992	814 hp	607 kW	233,430 lb	105882 kg	15-32 yd ³	11.5-24.5 m ³
993	973 hp	726 kW	294,687 lb	133668 kg	16.0-31 yd ³	12.2-23.7 m ³
995	1870 hp	1394 kW	540,555 lb	245192 kg	22.3-57 yd ³	17.2-43.6 m ³





Millyard Arrangements



	NET POWER		OPERATING WEIGHT		STATIC TIPPING LOAD (ARTICULATED)
988K	541 hp	403 kW	139,920 lb	63467 kg	68,005 lb
990K	699 hp	521 kW	202,398 lb	91806 kg	81,896 lb

Steel Mill Arrangements



	NET POWER		OPERATING WEIGHT		BUCKET CAPACITY
988K	541 hp	403 kW	112,574 lb	51063 kg	7.0-8.3 yd ³
990K	699 hp	521 kW	204,693 lb	92847 kg	11.2-12 yd ³

Waste/Scrap Handling Arrangements



	NET POWER		OPERATING WEIGHT		BUCKET CAPACITY
930M WHA	168 hp	125 kW	37,713 lb	17106 kg	3.9-6.5 yd ³
938M WHA	188 hp	140 kW	41,794 lb	18957 kg	3.9-6.5 yd ³

Block Handler Arrangements



	NET POWER		OPERATING WEIGHT		STATIC TIPPING LOAD FULL TURN (ARTICULATED 35°) FORKS (RIGID TIRE)
986K Block	373 hp	278 kW	116,688 lb	52929 kg	69,053 lb
988K Block	541 hp	403 kW	135,602 lb	61508 kg	84,815 lb

Wheel Tractor-Scrapers



Coal Bowl Scrapers

	FLYWHEEL POWER		SCRAPER CAPACITY - HEAPED		TOP SPEED - LOADED	
637K	570/290 hp	425/216 kW	50 yd ³	38 m ³	34.7 mile/hr	55.8 km/hr
657 CB	629/473 hp	469/353 kW	73 yd ³	56 m ³	34.85 mile/hr	56.1 km/hr

Elevating Scrapers

	FLYWHEEL POWER		SCRAPER CAPACITY - HEAPED		TOP SPEED - LOADED	
623K	407 hp	304 kW	23 yd ³	17.6 m ³	33.5 mile/hr	53.9 km/hr

Open Bowl Scrapers

	FLYWHEEL POWER		SCRAPER CAPACITY - HEAPED		TOP SPEED - LOADED	
621K	407 hp	304 kW	24 yd ³	18.4 m ³	33.5 mile/hr	53.9 km/hr
627K	407/290 hp	304/216 kW	24 yd ³	18.4 m ³	33.5 mile/hr	53.9 km/hr
631K	570 hp	425 kW	34 yd ³	26 m ³	34.7 mile/hr	55.8 km/hr
637K	570 hp	425 kW	34 yd ³	26 m ³	34.7 mile/hr	55.8 km/hr
651	629 hp	469 kW	44 yd ³	33.6 m ³	33 mile/hr	56.1 km/hr
657	629/473 hp	469/353 kW	44 yd ³	33.6 m ³	33 mile/hr	56.1 km/hr

Articulated Trucks



Articulated Truck Bare Chassis

	STANDARD WHEEL BASE		LONG WHEEL BASE		RATED PAYLOAD	
725C2 Bare Chassis	156.7"	3979 mm	215.2"	5465 mm	26 t	23.6 t
730C2 Bare Chassis	156.7"	3979 mm	215.2"	5465 mm	31 t	28 t

Three Axle Articulated Trucks

	ENGINE MODEL	RATED PAYLOAD		HEAPED	
725	Cat C9.3	26.5 t	24 t	19.6 yd ³	15 m ³
730	Cat C13	31 t	28 t	23 yd ³	17.5 m ³
730 EJ	Cat C13	30 t	27.1 t	22.1 yd ³	16.9 m ³
735	Cat C13	35.3 t	32 t	26.2 yd ³	20 m ³
740 EJ	Cat C18	42 t	38 t	30.1 yd ³	23 m ³
740 GC	Cat C15	40 t	36.3 t	29.7 yd ³	22.7 m ³
745	Cat C18	45.2 t	41 t	32.7 yd ³	25 m ³



Off-Highway Trucks

Mining Trucks

	NOMINAL RATED PAYLOAD		RATED GROSS MACHINE WEIGHT		GROSS POWER	
785	153 t	139 t	550,000 lb	249,476 kg	1,600 hp	1193 kW
789	213 t	193 t	715,001 lb	324,318 kg	2,100 hp	1566 kW
793	265 t	240 t	890,668 lb	404,000 kg	2,650 hp	1976 kW
793F	256 t	231 t	851,000 lb	386,007 kg	2,650 hp	1976 kW
794 AC	327 t	297 t	1,150,000 lb	521,631 kg	3,500 hp	2610 kW
796 AC	360 t	327 t	1,270,000 lb	576,072 kg	3,500 hp	2610 kW
797F	401 t	264 t	1,375,000 lb	623,690 kg	4,000 hp	2983 kW
798 AC	410 t	372 t	1,375,000 lb	623,690 kg	3,500 hp	2610 kW

Off-Highway Trucks

	ENGINE MODEL	PAYLOAD CLASS		TOP SPEED - LOADED	
770G	Cat C15	40 Ton	36.3 t	45.8 mile/hr	73.7 km/h
772G	Cat C18	50 Ton	45.4 t	49.2 mile/hr	79.2 km/h
773G	Cat C27	60 Ton	54.4 t	41.6 mile/hr	66.9 km/h
775G	Cat C27	70 Ton	63.5 t	41.6 mile/hr	66.9 km/h
777	Cat C32B	100 Ton	90.7 t	40.9 mile/hr	65.9 km/h

Off-Highway Trucks Bare Chassis

	TIER 4 BARE CHASSIS WEIGHT W/OUT HOIST		TRACTOR ROPS		NORMAL WATER TANK CAPACITY	
772G WTR Bare Chassis	59,567 lb	27,019 kg	77,430 lb	35,122 kg	11,000 gal	41,500 liter
775G WTR Bare Chassis	76,573 lb	34,733 kg	85,288 lb	38,686 kg	15,000 gal	56,775 liter
777G WTR Bare Chassis	112,565 lb	51,100 kg	133,082 lb	60,365 kg	20,000 gal	75,700 liter
785D WTR Bare Chassis	177,309 lb	80,426 kg	207,234 lb	94,000 kg	30,000 gal	113,500 liter



Excavators

Mini Excavators

	NET POWER		OPERATING WEIGHT		DIGGING DEPTH	
300.9D	13 hp	9.6 kW	2,061 lb	935 kg	68"	1731 mm
300.9D VPS & HPU300	13 hp	9.7 kW	2,399 lb	1088 kg	68"	1731 mm
301.5	21 hp	15.7 kW	3,913 lb	1775 kg	100"	2540 mm
301.7 CR	21 hp	15.7 kW	4,222 lb	1915 kg	100"	2540 mm
301.8	21 hp	15.7 kW	4,473 lb	2029 kg	101.2"	2570 mm
302 CR	21 hp	15.7 kW	4,987 lb	2262 kg	101.2"	2570 mm
302.7 CR	23.6 hp	17.6 kW	6,725 lb	3050 kg	106.7"	2710 mm
303 CR	23.6 hp	17.6 kW	7,817 lb	3545 kg	116.1"	2949 mm
303.5 CR	23.6 hp	17.6 kW	9,239 lb	4190 kg	122.4"	3109 mm
304	45 hp	33.6 kW	9,867 lb	4475 kg	138.2"	3510 mm
305 CR	45 hp	33.6 kW	12,688 lb	5754 kg	144.5"	3670 mm
306 CR	55.9 hp	41.7 kW	15,766 lb	7150 kg	162"	4115 mm
307.5	54.8 hp	40.9 kW	17,905 lb	8120 kg	182.8"	4643 mm
308 CR	69.5 hp	51.8 kW	20,077 lb	9107 kg	182.8"	4643 mm
308 CR VAB	69.5 hp	51.8 kW	20,385 lb	9246 kg	150.2"	3815 mm
309 CR	69.5 hp	51.8 kW	21,091 lb	9565 kg	182.8"	4643 mm
309 CR VAB	69.5 hp	51.8 kW	21,477 lb	9740 kg	150.2"	3815 mm
310	69.5 hp	51.8 kW	22,451 lb	10182 kg	205.2"	5211 mm

Small Excavators

	NET POWER (ISO 9249)		OPERATING WEIGHT		DIGGING DEPTH	
313 GC	73 hp	54.3 kW	30,400 lb	13800 kg	19.8'	6040 mm
313	108 hp	80.9 kW	30,400 lb	13800 kg	19.8'	6040 mm
315 GC	98 hp	73 kW	34,000 lb	15400 kg	19.6'	5990 mm
315	108 hp	80.9 kW	34,000 lb	15400 kg	19.6'	5990 mm
317	130 hp	97 kW	40,200 lb	18200 kg	21'	6400 mm
317GC	119 hp	89 kW	38,000 lb	17200 kg	21'	6400 mm

Medium Excavators

	NET POWER (ISO 9249)		OPERATING WEIGHT		DIGGING DEPTH	
320 GC	146 hp	109 kW	48,300 lb	21909 kg	22'	6720 mm
320	172 hp	128.5 kW	49,600 lb	22500 kg	22.1'	6720 mm
323	172 hp	128.5 kW	54,900 lb	24900 kg	22.1'	6730 mm
325	172 hp	128.5 kW	62,800 lb	28500 kg	22'	6700 mm
326	201 hp	149.8 kW	56,400 lb	25600 kg	22.38'	6820 mm
330 GC	201 hp	150 kW	67,900 lb	30800 kg	23.8'	7260 mm
330	273 hp	203.7 kW	69,200 lb	31400 kg	23.9'	7240 mm
335	273 hp	203.7 kW	77,000 lb	34900 kg	22.11'	6990 mm

Large Excavators

	NET POWER (ISO 9249)		OPERATING WEIGHT		DIGGING DEPTH	
336	300 hp	223 kW	81,200 lb	36800 kg	26.11'	8210 mm
340	346 hp	258 kW	83,100 lb	37700 kg	27.1'	8260 mm
350	413 hp	308 kW	105,100 lb	47700 kg	26.11'	8210 mm
352	443 hp	330 kW	111,300 lb	50500 kg	26.11'	8210 mm
374	484 hp	361 kW	158,200 lb	71700 kg	28.1'	8570 mm
395	542 hp	404 kW	207,300 lb	94000 kg	31.9'	9670 mm





Demolition Excavators

	OPERATING WEIGHT		MAX PIN HEIGHT		MAX WEIGHT	
340 Straight Boom	88,500 lb	40200 kg	45.2'	13.77 m	10,570 lb	4795 kg
352 UHD	151,483 lb	68700 kg	90.75'	27.67 m	8,157 lb	3700 kg
352 Straight Boom	114,900 lb	52100 kg	40.9'	12.4 m	13,470 lb	6110 kg
340 UHD	128,000 lb	58050 kg	72.2'	22 m	8,160 lb	3700 kg



Forest Machines

	ENGINE MODEL	GROSS POWER (ISO 14396)	
538	Cat C7.1	174 hp	129 kW
548	Cat C7.1	275 hp	205 kW
558	Cat C7.1	302 hp	225 kW
568	Cat C9.3B	347 hp	259 kW



Long Reach Excavators

	ENGINE POWER		OPERATING WEIGHT		DIGGING DEPTH	
340 Long Reach	311 hp	232 kW	96,700 lb	43900 kg	42.8'	13050 mm
352 Long Reach	424 hp	316 kW	128,800 lb	58400 kg	42.8'	13040 mm



Wheel Excavators

	NET POWER (ISO 9249)		MAX OPERATION WEIGHT		MAX TRAVEL SPEED	
M314	134 hp	100 kW	39,683 lb	18000 kg	23 mph	37 kmh
M315	148 hp	108 kW	39,680 lb	18000 kg	21.7 mph	35 kmh
M316	148 hp	110 kW	36,400 lb	16510 kg	21.7 mph	35 kmh
M318	174 hp	129 kW	43,980 lb	19950 kg	21.7 mph	35 kmh
M319	174 hp	128 kW	46,407 lb	21050 kg	21.7 mph	35 kmh
M320	174 HP	129 kW	46,740 lb	21200 kg	21.7 mph	35 kmh
M322	174 hp	129 kW	52,911 lb	24000 kg	18.6 mph	30 kmh

Wheel Material Handlers

	ENGINE MODEL	OPERATING WEIGHT		MAX REACH	
MH3022	Cat C4.4	54,000 lb	24500 kg	33.8 ft	10280 mm
MH3024	Cat C4.4	59,100 lb	26800 kg	39.4 ft	12010 mm
MH3026	Cat C7.1	64,375 lb	29200 kg	42.7 ft	13000 mm
MH3040	Cat C7.1	84,900 lb	38529 kg	50.8 ft	15490 mm
MH3250	Cat C9.3B	107,700 lb	48850 kg	52.5 ft	16010 mm
MH3260	Cat C13	133,200 lb	60420 kg	59.1 ft	18000 mm



Track Loaders

	FLYWHEEL POWER		OPERATING WEIGHT		CAPACITY	
953	160 hp	119 kW	34,594 lb	15692 kg	2.4 yd ³	1.8 m ³
963	202 hp	151 kW	44,881 lb	20358 kg	3.2 yd ³	2.5 m ³
973K	275 hp	205 kW	63,900 lb	28985 kg	4.2 yd ³	3.2 m ³



Compactors

Landfill Compactors

	OPERATING WEIGHT		GROSS POWER		NET POWER	
826K	90,207 lb	40917 kg	435 hp	324 kW	405 hp	302 kW
816	57,345 lb	26052 kg	284 hp	212 kW	249 hp	186 kW
836	123,319 lb	55927 kg	562 hp	419 kW	496 hp	370 kW

Soil Compactors

	ENGINE MODEL	NET POWER		OPERATING WEIGHT	
815	Cat C7.1	249 hp	186 kW	49,652 lb	22522 kg
825K	Cat C15	405 hp	302 kW	78,326 lb	35528 kg

Dozers

Small Dozers

	ENGINE MODEL	NET POWER		OPERATING WEIGHT	
D1	Cat C3.6	80 hp	59.7 kW	17,855 lb	8099 kg
D1 Mulcher	Cat C3.6	104 hp	77.6 kW	23,338 lb	10586 kg
D2	Cat C3.6	92 hp	68.8 kW	18,382 lb	8338 kg
D3	Cat C3.6	104 hp	77.6 kW	20,640 lb	9362 kg

Medium Dozers

	ENGINE MODEL	NET POWER		OPERATING WEIGHT	
D4	Cat C4.4	130 hp	97 kW	29,258 lb	13271 kg
D5	Cat C7.1	170 hp	127 kW	42,263 lb	19170 kg
D6	Cat C9.3B	215 hp	161 kW	50,733 lb	23012 kg
D6 XE	Cat C9.3B	215 hp	161 kW	51,333 lb	23285 kg
D7	Cat C9.3B	265 hp	197 kW	65,644 lb	29776 kg
D8	Cat C15	354 hp	264 kW	87,600 lb	29750 kg

Large Dozers

	ENGINE MODEL	ENGINE POWER		OPERATING WEIGHT	
D9	Cat C18	452 hp	337 kW	110,225 lb	49988 kg
D10	Cat C27	631 hp	471 kW	154,888 lb	70256 kg
D11/D11 CD	Cat C32	850 hp	634 kW	229,800 lb	104236 kg

Wheel Dozers

	ENGINE MODEL	NET POWER		OPERATING WEIGHT	
814	Cat C7.1	249 hp	186 kW	48,526 lb	22011 kg
824K	Cat C15	405 hp	302 kW	74,966 lb	34004 kg
834K	Cat C18	496 hp	370 kW	105,271 lb	47750 kg
834K Scoops for Coal & Woodchips	Cat C18	496 hp	370 kW	112,838 lb	51290 kg
844	Cat C27	699 hp	521 kW	165,089 lb	74883 kg
854	Cat C32B	907 hp	676 kW	224,254 lb	101720 kg

Motor Graders

MODEL	NET POWER (1ST GEAR)		TYPICALLY EQUIPPED OPERATING WEIGHT		BLADE WIDTH	
120 GC	154 hp	115 kW	31,958 lb	14496 kg	10, 12, 14'	3, 3.6, 4.3 m
120 GC AWD	163 hp	122 kW	33,162 lb	15042 kg	10, 12, 14'	3, 3.6, 4.3 m
120	140 hp	104 kW	35,871 lb	16271 kg	12, 14'	3.6, 4.3 m
120 AWD	146 hp	109 kW	37,657 lb	17081 kg	12, 14'	3.6, 4.3 m
140 GC	176 hp	131 kW	40,488 lb	18365 kg	12, 14'	3.6, 4.3 m
140 GC AWD	196 hp	146 kW	42,119 lb	19105 kg	12, 14'	3.6, 4.3 m
140 Lever	177 hp	132 kW	42,325 lb	19198 kg	12, 14'	3.6, 4.3 m
140 AWD Lever	197 hp	147 kW	44,613 lb	20236 kg	12, 14'	3.6, 4.3 m
140	179 hp	133 kW	42,647 lb	19344 kg	12, 14'	3.6, 4.3 m
140 AWD	200 hp	149 kW	44,614 lb	20236 kg	12, 14'	3.6, 4.3 m
150	200 hp	149 kW	43,950 lb	19935 kg	12, 14'	3.6, 4.3 m
150 AWD	210 hp	157 kW	45,917 lb	20828 kg	12, 14'	3.6, 4.3 m
160	221 hp	165 kW	45,547 lb	20660 kg	12, 14'	3.6, 4.3 m
160 AWD	231 hp	172 kW	47,514 lb	21552 kg	12, 14, 16'	3.6, 4.3, 4.9 m
14	238 hp	177 kW	57,250 lb	25968 kg	14, 16'	4.3, 4.9 m
16	290 hp	216 kW	71,454 lb	32411 kg	16'	4.9m
18	304 hp	227 kW	74,324 lb	33713 kg	18'	5.5 m
24	535 hp	399 kW	165,314 lb	74985 kg	24, 28'	7.3, 8.5 m



Pipelayers

	FLYWHEEL POWER		LIFT CAPACITY	
PL61	130 hp	97 kW	40,000 lb	18144 kg
PL72	211 hp	158 kW	90,000 lb	40823 kg
PL83	319 hp	238 kW	170,000 lb	77111 kg
PL87	319 hp	238 kW	216,000 lb	97976 kg

CAT® PAVING PRODUCTS

Asphalt Paving Machines



Track Asphalt Pavers

	GROSS POWER		STANDARD PAVING RANGE		OPERATING WEIGHT	
	hp	kW			lb	kg
AP355 Mobile-Trac™	74.8	55	5'9"-15'1"	1.75-4.6 m	16,094	7100
AP455 Mobile-Trac™	120	90	8'0"-20'0"	2.4-6.1 m	24,837	11266
AP555 Mobile-Trac™	148	110	8'0"-20'6"	2.4-6.2 m	26,993	12244
AP655 Mobile-Trac™	173	129	8'0"-21'4"	2.44-6.5 m	33,730	15292
AP1055 Mobile-Trac™	225	168	10'0"-33'0"	3.0-10.0 m	36,800	16691

Wheel Asphalt Pavers

	GROSS POWER		STANDARD PAVING RANGE		OPERATING WEIGHT	
	hp	kW			lb	kg
AP300	74.8	55	5'9"-13'1"	1.75-4.0 m	14,550	6600
AP400	120	90	8'0"-20'0"	2.4-6.1 m	23,327	10581
AP500	148	110	8'0"-20'6"	2.4-6.2 m	25,311	11481
AP600	173	129	8'0"-21'4"	2.44-6.5 m	29,391	13556
AP1000	225	168	10'0"-25'6"	3.05-7.8 m	34,228	15526



Screeds

	STANDARD WEIGHT		STANDARD PAVING RANGE		MAX PAVING WIDTH	
	lb	kg				
SE34 V	3,086	1400	5'9"-11'2"	1.75-3.42 m	15'1"	4.6 m
SE47 FM	6,200	2812	8'0"-15'6"	2.44-4.7 m	20'6"	6.25 m
SE47 V	5,850	2654	8'0"-15'6"	2.44-4.7 m	20'0"	6.1 m
SE50 V	7,239	3284	8'4"-16'4"	2.55-5.0 m	21'4"	6.5 m
SE50 VT	7,695	3490	8'4"-16'4"	2.55-5.0 m	26.4'	8 m
SE60 FM	7,800	3538	10'0"-19'6"	3.05-5.94 m	25'6"	7.77 m
SE60 V	7,495	3400	9'10"-19'6"	3.0-6.0 m	25'	7.65 m
SE60 V XW	8,973	4070	9'10"-19'6"	3.0-6.0 m	33'	10 m
SE60 VT XW	9,991	4532	9'10"-19'6"	3.0-6.0 m	33'	10 m



Compactors

Pneumatic Rollers

	OPERATING WEIGHT		MAX OPERATING WEIGHT		COMPACTION WIDTH	
	lb	kg	lb	kg		
CW34	21,275	9650	59,525	27000	82"	2090 mm
CW16 9-Wheel	11,464	5200	33,069	15000	68"	1728 mm
CW16 11-Wheel	11,685	5300	33,069	15000	84"	2132 mm



Tandem Vibratory Rollers

	OPERATING WEIGHT		STANDARD COMPACTION WIDTH		GROSS POWER	
	lb	kg			hp	kW
CB1.7	3,538	1605	35"	900 mm	24.7	18.4
CB1.8	3,825	1735	39"	1000 mm	24.7	18.4
CB2.5	5,546	2521	39.4"	1000 mm	48.2	36.0
CB2.7	5,936	2698	47.2"	1200 mm	48.2	36.0
CB2.9	6,415	2916	51.2"	1300 mm	48.2	36.0
CC2.7	5,718	2599	47.2"	1200 mm	48.2	36.0
CB2.5 GC	5,546	2521	39.4"	1000 mm	24.7	18.4
CB2.7 GC	5,936	2698	47.2"	1200 mm	24.7	18.4
CC2.7 GC	5,718	2599	47.2"	1200 mm	24.7	18.4
CB4.0	7,971	3623	51.2"	1300 mm	48.2	36
CB4.4	8,362	3801	55.1"	1400 mm	48.2	36
CC4.0	7,889	3586	51.2"	1300 mm	48.2	36
CB7	19,015	8625	59"	1500 mm	100	74.4
CB8	18,783	8520	67"	1700 mm	100	74.4
CB10	21,642	9815	67"	1700 mm	120	90
CB13	27,557	12500	79"	2000 mm	142	106
CB15	28,958	13135	84"	2130 mm	142	106
CB16	31,941	14488	84"	2130 mm	142	106
CCS9 Combi	19,842	9000	84"	2130 mm	131	98



Vibratory Soil Compactors

	OPERATING WEIGHT		COMPACTION WIDTH		GROSS POWER	
	lb	kg			hp	kW
CP34	10,307	4675	50"	1270 mm	74	55
CS34	9,800	4445	50"	1270 mm	74	55
CP44B	16,471	7471	66"	1676 mm	100.6	75
CS44B	15,895	7210	66"	1676 mm	100.6	75
CP54B	24,539	11135	84"	2134 mm	131.3	98
CS54B	23,265	10555	84"	2134 mm	131.3	98
CS10 GC	23,136	10494	84"	2134 mm	121	90
CP56B	25,707	11665	84"	2134 mm	156.9	117
CS56B	25,346	11500	84"	2134 mm	157	117
CP11 GC	25,109	11389	84"	2134 mm	121	90
CS11 GC	24,775	11237	84"	2134 mm	121	90
CP12 GC	27,869	12641	84"	2134 mm	121	90
CS12 GC	27,900	12655	84"	2134 mm	121	90
CS64B	27,238	12354	84"	2134 mm	131.3	98
CP68B	32,370	14685	84"	2134 mm	156.9	117
CS68B	31,605	14335	84"	2134 mm	156.9	117
CP74B	36,048	16355	84"	2134 mm	173.5	129
CS74B	36,264	16000	84"	2134 mm	173.5	129
CS78B	41,641	18700	84"	2134 mm	173.5	129



Road Reclaimers



	MAX OPERATING WEIGHT		CUTTING/MIXING WIDTH		GROSS POWER	
	lb	kg	in	mm	hp	kW
RM400	58,863	26700	96"	2438	415.7	310
RM500B	62,611	28400	96"	2438	546	407
RM600	79,397	36014	96"	2438	636	474
RM800	75,722	34347	96"	2438	762	568

Cold Planers



	MILLING WIDTH		RATED POWER		OPERATING WEIGHT	
	in	mm	hp	kW	lb	kg
PM310 Track Undercarriage	39.4"	1000	336.6	251	48,016	21780
PM312 Track Undercarriage	48.2"	1225	336.6	251	48,429	21967
PM313 Track Undercarriage	51.2"	1300	336.6	251	48,658	22071
PM310 Wheel Undercarriage	39.4"	1000	336.6	251	46,473	21080
PM312 Wheel Undercarriage	48.2"	1225	336.6	251	46,886	21267
PM313 Wheel Undercarriage	51.2"	1300	336.6	251	47,115	21371
PM620	79.1"	2010	636	474	73,480	33330
PM622	88"	2235	636	474	74,737	33900
PM820	79.1"	2010	806	601	79,653	36130
PM822	88"	2235	806	601	80,910	36700
PM825	98.6"	2505	806	601	82,673	37500

WEILER PAVING PRODUCTS

Asphalt Paving Machines



MODEL	ENGINE	WIDTH	WEIGHT
P395	Cat C3.6 Tier 4	102 in	25,000 lb
P385C	Cat C3.4B Tier 4	102 in	20,500 lb
P265	Cat C3.4B Tier 4	98 in	16,200 lb
P195 Path Paver	Cat C2.2 Tier 4	55 in	13,000 lb
P65 Gravity Feed Paver	Cat C2.2 Tier 4	98 in	12,600 lb

Fixed Screeds

MODEL	PAVING WIDTH	WEIGHT
SF8	8-20.5 ft	6,200 lb
SF10	10-24 ft	6,800 lb

Compactors



MODEL	ENGINE	POWER	DRUM WIDTH	OPERATING WEIGHT
C307A Static Split-drum	Cat C3.4B Tier 4	74 hp	50 in	14,080 lb
C310A Static Split-drum	Cat C3.4B Tier 4	74 hp	50 in	20,160 lb
C303	Cat C1.1 Tier 4	24 hp	38 in	5,700 lb

Force Feed Loader



MODEL	ENGINE	GROSS POWER	BELT WIDTH	WEIGHT
E1050	Cat C4.4 Tier 4F	137 hp	30 in	20,160 lb

Tack Distributors



MODEL	ENGINE	POWER	CAPACITY
TT250	Kohler	5.5 hp	250 gal
TT300	Kohler	9.5 hp	300 gal
TT500	Kohler	5.5 hp	500 gal
TT600	Kohler	9.5 hp	600 gal

Windrow Elevators



MODEL	ENGINE	POWER	WEIGHT
E650C	Cat C4.4 Tier 4	137 hp	21,860 lb
E550C	Cat C4.4 Tier 4	137 hp	21,400 lb

Remixing Transfer Vehicles



MODEL	ENGINE	POWER	WEIGHT
E2860C	Cat C7.1 Tier 4	300 hp	75,000 lb
E2850C	Cat C7.1 Tier 4	300 hp	72,500 lb
E1650	Cat C7.1 Tier 4	250 hp	67,200 lb
E1250C	Cat C7.1 Tier 4/Stage 5	250 hp	53,400 lb





Road Wideners

MODEL	ENGINE	STRIKE-OFF	WEIGHT
W330B	Cat C2.2T Tier 4	1-6 ft	14,800 lb
W430A	Cat C3.4B Tier 4	1-8 ft	19,500 lb
W530B	Cat C3.6 Tier 4	1-10 ft	26,327 lb
W730C	Cat C4.4B Tier 4	1-14 ft	37,200 lb



Rock Drills

MODEL	ENGINE	GROSS POWER	MAX DEPTH	WEIGHT
D460	Cat C7.1 Tier 4	300 hp	102.5 in	45,500 lb
D560	Cat C9.3	375 hp	102.5 in	48,500 lb



Soil Stabilizer

MODEL	ENGINE	GROSS POWER	OPERATING WIDTH/DEPTH	WEIGHT
S200	Cat C9.3B Tier 4	375 hp	78/14 in	42,000 lb



Blade Lights

Durable and versatile, the dual-panel provides a 210° beam spread for excellent flood lighting that is securely mounted, yet easily moved machine to machine as needed. LED technology increases efficiency while reducing heat for longer life. Die-cast housing, reinforced gasketed bezel and heavy-duty storage case protect the lights on and off your jobsites.



Lightweight Auger Extension

F - Series Augers

PART	LENGTH	DIAMETER
30065 Left Hand	4'	16"
30064 Right Hand	4'	16"
30062 Left Hand	3.5'	16"
30061 Right Hand	3.5'	16"
30068 Left Hand	3'	16"
30067 Right Hand	3'	16"
34196 Left Hand	2'	16"
34197 Right Hand	2'	16"
30071 Left Hand	1.5'	16"
30070 Right Hand	1.5'	16"

D - Series / E - Series Augers

PART	LENGTH	DIAMETER
21938 Left Hand	4'	16"
21939 Right Hand	4'	16"
25639 Left Hand	3.5'	16"
25640 Right Hand	3.5'	16"
22175 Left Hand	3'	16"
22176 Right Hand	3'	16"
22173 Left Hand	2'	16"
22174 Right Hand	2'	16"



Motor Grader

MODEL	ENGINE	GROSS POWER	MAX SPEED	WEIGHT	BLADE RANGE
G65	Cat C3.6 Tier 4F/Stage V	120 hp	24 mph	17,000 lb	53° to 107.5°

WEILER FORESTRY PRODUCTS



Wheel Feller Bunchers

MODEL	ENGINE	GROSS POWER	WEIGHT
B570A	Cat C7.1 Stage 5	203 hp	39,120 lb
B670A	Cat C7.1 Stage 5	241 hp	39,656 lb
B770	Cat C7.1 Stage 5	302 hp	39,656 lb



Track Feller Bunchers

MODEL	ENGINE	GROSS POWER	WEIGHT
B457	Cat C9.3 Tier 4	298 hp	67,020 lb
B458	Cat C9.3 Tier 4	298 hp	79,221 lb



Wheel Skidders

MODEL	ENGINE	GROSS POWER	WEIGHT
S240	Cat C7.1 Stage 5	203 hp	41,000 lb
S250	Cat C7.1 Tier 4	203 hp	45,357 lb
S340	Cat C7.1 Stage 5	265 hp	43,500 lb
S350	Cat C7.1 Tier 4	225 hp	45,888 lb
S450	Cat C7.1 Tier 4	250 hp	48,333 lb
S550	Cat C7.1 Tier 4	275 hp	49,336 lb



Weiler Track Harvesters

MODEL	ENGINE	GROSS POWER	WEIGHT
H157	Cat C4.4	184 hp	47,000 lb
H457	Cat C9.3 Tier 4/Stage 5	298 hp	67,140 lb
H458	Cat C9.3 Tier 4	298 hp	78,229 lb



Weiler Mulcher

MODEL	ENGINE	GROSS POWER	WEIGHT
M860	Cat 9.3B Tier 4	375 hp	38,450 lb



Weiler Knuckleboom Loaders

MODEL	ENGINE	GROSS POWER	WEIGHT
K860	Cat 7.1 Stage 5	202 hp	36,500 lb
K760	Cat C4.4 Stage 5	184 hp	36,500 lb
K660	Cat 7.1 Stage 5	202 hp	33,800 lb
K560	Cat C4.4 Stage 5	184 hp	33,800 lb

Stationary

MODEL	ENGINE	GROSS POWER	WEIGHT
K161	Electric	60 hp	10,610 lb
K261	Electric	75 hp	15,915 lb
K561	Electric	100 hp	32,000 lb

Self-Propelled

MODEL	ENGINE	GROSS POWER	WEIGHT
K762	Cat C4.4 Stage 5	184 hp	36,500 lb
K562	Cat C4.4 Stage 5	184 hp	33,800 lb

Prentice A-Frame

MODEL	ENGINE	GROSS POWER	WEIGHT
2124	NA	NA	6,050 lb



ASTEC



Peterson Horizontal Grinders

MODEL	STANDARD DIESEL ENGINE	FEED OPENING (W X H)	GREEN WASTE*	SCRAP BOARD*	MACHINE WEIGHT
1710	CAT C9.3B Tier IV, 455 hp	54" x 27"	140 yd ³	185 yd ³	46,500 lbs
2710	CAT C15 Tier IV, 580 hp	60" x 32"	300 yd ³	368 yd ³	68,100 lbs
4710	CAT C18 Tier IV, 755 hp	60" x 38"	360 yd ³	425 yd ³	79,000 lbs
5710	CAT C27 Tier IV, 1050 hp	60" x 40"	501 yd ³	591 yd ³	95,000 lbs
6710	CAT C32 Tier IV, 1125 hp	66" x 50"	583 yd ³	653 yd ³	108,500 lbs

*Actual production output may vary due to moisture content, material density and size, support equipment, grate size, and equipment options. Production rates are based on operating 50 minutes per hour with the standard diesel engine.

I-ROCK



Crushers

Mobile Jaw Crushers

MODEL	ENGINE	POWER	STOCKPILING HT.	FEEDER HOPPER CAP.	JAW SIZE
TJ-2440	Cat C7.1	225 hp	11' 4"	7.4 yd ³	40" x 24"
TJ-2745	Cat C9.3B	350 hp	12' 9"	7.3 yd ³	45" x 27"
TJ-2950	Cat C9.3	350 hp	13' 11"	8.9 yd ³	50" x 29"



Mobile Impact Crushers

MODEL	ENGINE	POWER	STOCKPILING HT.	FEEDER SIZE	ROTOR
TC-15CC	Cat C9.3B	415 hp	10' 5"	8' x 40"	40" x 43"
TC-20	Cat C13B	456 hp	10' 11"	52" x 16'	40" x 56"



Portable Impact Crushers

MODEL	ENGINE	POWER	FEEDER SIZE	TOP DECK	BOTTOM DECK
RDS-15	Cat C9.3B	415 hp	40" x 14'	14' x 5'	14' x 5'
RDS-20	Cat C13	496 hp	52" x 17'	16' x 5'	16' x 5'



Peterson Drum Chippers

MODEL	STANDARD DIESEL ENGINE	FEED OPENING (W X H)	PRODUCTION*	MACHINE WEIGHT
4300B	CAT C18 Tier IV, 755 hp	40" x 24"	60 to 120 tons	52,000 lbs
4310B	CAT C18 Tier IV, 755 hp	40" x 24"	60 to 120 tons	58,500 lbs
4310B Highwalker	CAT C18 Tier IV, 755 hp	40" x 24"	60 to 120 tons	58,500 lbs
6300B	CAT C27 Tier IV, 1050 hp	57" x 36"	up to 250 tons	85,000 lbs
6310B	CAT C27 Tier IV, 1050 hp	57" x 36"	up to 250 tons	86,000 lbs

*Actual production output may vary due to moisture content, material density and size, support equipment, grate size, and equipment options. Production rates are based on operating 50 minutes per hour with the standard diesel engine.



Conveyors

MODEL	ENGINE	POWER	TRANSPORT HEIGHT / LENGTH / WIDTH	STOCKPILE HT. @ 22°
M-5032	Cat C2.2	49 hp	9' 11" / 39' 4" / 8' 2"	20' 11"
M-8036	Cat C3.4	49 hp	13' 6" / 61' 10" / 10' 2"	31' 1"
M-10036	Cat C3.4	74 hp	13' 6" / 69' 6" / 10' 11"	41' 3"
MT-8036	Cat C2.2	49 hp	13' 2" / 51' 4" / 8' 5"	31' 1"
MT-10036	Cat C3.4	74 hp	13' 6" / 70' 6" / 8' 5"	41' 3"



Mobile Scalping Screens

MODEL	ENGINE	POWER	TRANSPORT HEIGHT / LENGTH / WIDTH	STOCKPILE HT.
TS-409	Cat C4.4	130 hp	10' 6" / 31' 9" / 8' 4"	11' 1"-11' 8"
TS-4512	Cat C4.4	130 hp	10' 6" / 42' 9" - 48' / 8' 4"	11' 4"-11' 11"
TS-516	Cat C4.4	130 hp	11' 2" / 50' 2" / 9' 6"	13' 0"
TS-620	Cat C7.1	225 hp	11' 5.8" / 55' 8" / 9' 10"	Up to 12'

MOBILE TRACK SOLUTIONS



Construction-Grade Tractors

MODEL	POWER	ENGINE	TRANSMISSION
3630T Switchback	630 hp	Cat ACERT C18 Tier 4 Final	Cat TA22H
3630W Switchback	630 hp	Cat ACERT C18 Tier 4 Final	Cat TA22H



Towed Scrapers

MODEL	CAPACITY	APRON OPENING	WIDTH
23-28	28.2 yd ³	69"	144"
23-28XL	28.2 yd ³	69"	144"
28-33	33 yd ³	76"	164"
33-38XL	38.8 yd ³	82"	166"
33-38 LGP	39.6 yd ³	81"	166"



Construction-Grade Disks

MODEL	WIDTH	DISC SIZE	MAINTENANCE
13x38	13'	13"	Independent Gangs & Oil Bearings
11x32	11'	11"	Independent Gangs & Oil Bearings



Construction-Rollerblade

MODEL	WIDTH	MAINTENANCE
MT-12	12'	Cat Replaceable Cutting Edges Optional Wheel Package Low Maintenance: 2 Grease Zerk
MT-14	14'	Cat Replaceable Cutting Edges Optional Wheel Package Low Maintenance: 2 Grease Zerk

SB MANUFACTURING



Sweepers

MODEL	ENGINE	POWER	DIMENSIONS HEIGHT / LENGTH / WIDTH	SWEEPING WIDTH
SM74C	Cat C3.4	74 hp	7' 6" / 16' 7" / 8' 4"	96"
DT74C	Cat C3.4	74 hp	8' 6" / 14' 4" / 8'	96"



SCREEN MACHINE



Crushers

Impact Crushers

MODEL	ENGINE	POWER	DISCHARGE HT.	HOPPER SIZE	ROTOR
4043T	Cat C9.3B	376 hp	10' 9"	6' x 14'	40" x 43"
5256T	Cat C13	475 hp	12' 7"	7' x 16'	52" x 56"
4043TR	Cat C9.3B	376 hp	10' 10"	6' x 14'	40" x 43"

All feature Crusher Relief System, which allows the lifting lid to be raised 6" to clear blockages.



Jaw Crushers

MODEL	ENGINE	POWER	DISCHARGE HT.	HOPPER SIZE	JAW DIA.
JHT	Cat C9.3B	376 hp	10' 9"	6' x 14'	26" x 45"
JXT ¹	Cat C9.3B	376 hp	10' 9"	6' x 14'	26" x 45"

¹Includes blockage clearance/Tramp Iron relief, System clears chamber of uncrushables.



Cone Crusher

MODEL	ENGINE	POWER	STOCKPILING HT.	FEEDER SIZE	ROTOR
CST	Cat C9.3B	350 hp	10' 10"	8' x 13'	3' 2"
CXT	Cat C13	376 hp	11' 4"	8' x 13'	3' 2"

Optimized choke-fed operation with automatic feed control.



Screeners

Spyder Screen Plants

MODEL	ENGINE	POWER	DISCHARGE HTS.	HOPPER SIZE	SCREEN SIZE
520TS3 ¹	Cat C4.4	110 hp	16' 9", 16' 9", 16' 11", 17' 3"	6' x 16'	5' x 20'
516T	Cat C4.4	110 hp	9' 4", 13' 0", 12' 6"	7' x 15'	5' x 16'
514TS3 ¹	Yanmar	74 hp	9' 4", 13' 0", 12' 6", 16' 0"	5' x 14'	5' x 14'
514TS	Yanmar	74 hp	9' 4", 13' 0", 12' 6"	5' x 14'	5' x 14'

¹Triple-deck Spyder Screen Plants with four conveyors.



Scalper Screen Plants

MODEL	ENGINE	POWER	DISCHARGE HT.	HOPPER SIZE	SCREEN SIZE
107T	Yanmar	74 hp	11' 0"	14' x 7'	(2) 5' x 7'
107D	Yanmar	74 hp	N/A	14' x 7'	(2) 5' x 7'
77C	Yanmar	48 hp	11' 5"	7' x 7'	7' x 7'

107T and 107D feature patented dual-screen design with center reinforcement bar.



Trommel Screen Plants

MODEL	ENGINE	POWER	DISCHARGE HT.	HOPPER SIZE	TROMMEL DIA.
621ST, 621T	Cat C4.4	110 hp	11' 5", 13' 7"	8' x 15'	6' x 21'
612T, 612W	Yanmar	74 hp	12' 8", 9' 1"	4' x 10'	6' x 12'
Might II	Yanmar	24 hp	9' 8"	3' x 6'	3' x 4'

621ST includes patented hammermill shredder. 612T is tracked, 612W is on wheels.

ROAD WIDENER



Shouldering and Side Paver Attachment

MODEL	LAY DOWN WIDTHS SINGLE/DUAL	EMPTY WEIGHT SINGLE/DUAL	REQUIREMENTS
FH	1' to 4'/1' to 4'	2,900/3,400 lb	-
FH-R	1' to 4'/1' to 4'	2,900/3,400 lb	Includes Remote. 12 Volt required.

FH and FH-R attachments are available as either a single discharge or a dual discharge. Single discharge attachments are available in either a left or right discharge. All Road Widener attachments are designed to fit on any machine and are capable of laying down any material, making them the most versatile lay-down solution on the market.



Offset Vibratory Roller Attachment

MODEL	ARM WEIGHT	DRUM WIDTH	DRUM MASS	MIN. CENTRIFUGAL FORCE	MIN. CENTRIFUGAL FORCE	VPM
AVR - 2	900 lb	2'	570 lb	1513 lbf	3016 lbf	2,500 - 3,500
AVR - 3	900 lb	3'	713 lb	1513 lbf	3110 lbf	2,500 - 3,500
AVR - 4	900 lb	4'	819 lb	1513 lbf	3196 lbf	2,500 - 3,500

Attaches to any brand of host machine via SAE quick connector coupling. Compatible with your loader, skid steer, compact track loader or road grader. Works with standard and high-flow hydraulics. Remote control capabilities for convenient and effortless operation.



WORK TOOL ATTACHMENTS

THE RELIABLE CHOICE

Using high quality Cat® Work Tools in combination with your Cat machines provides perfect performance matches. No matter which attachments you choose from our extensive range, you benefit from: uninterrupted productivity; a single point of contact for all your equipment needs; the backing of unrivaled parts and service, and a vast dealer network. Because they are Cat Work Tool Attachments, they also provide a high resale value.

Cat SMART Attachments with ASSIST Features Improve Productivity

Caterpillar upgraded the D3 Series with new SMART attachment blades and backhoe. Three new Cat SMART attachments, the Dozer Blade, Grader Blade, and Backhoe, are designed to add significant versatility to the range of D3 Series Cat Skid Steer Loaders and

Compact Track Loaders. The control systems for the new attachments enable operators to easily adapt each machine's standard controls to precisely match the recognized SMART Attachments' control needs.

The ASSIST feature enhances operator proficiency to achieve smoother grades with fewer passes by coordinating machine and blade movements to craft flat surfaces, enabling the operator to concentrate on building or cutting material to achieve the desired grade.

As you will see, we offer everything you need to get the job done efficiently and with confidence. Whether you need to cut, rip or tear, sort or load, lift or dig, move or level, pulverize or crush – we have the solution.

Contact our dealership for more details about Cat Work Tool Attachments.

Augers

Augers are designed for drilling holes with the right amount of speed and torque for maximum productivity in many soil types. Cat Augers are for use on Cat Skid Steer Loaders, Compact Track Loaders, Compact Wheel Loaders, Mini Excavators and Backhoe Loaders.



Bale Handlers

The Bale Handler is designed to load, carry and handle round and square bales of hay, straw, cotton and other similar materials. This telehandler work tool is ideal for hay handling, feedlot operations, cattle and horse farms, stables and silage applications.



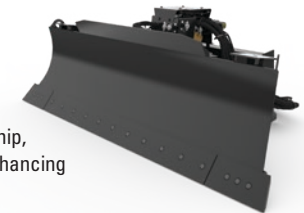
Backhoes

Backhoe attachments are used for digging footings, drainage ditches, utility trenching, maintaining slopes and embankments in a variety of construction, industrial and landscape settings. They pair well with hammers, thumbs and augers – extending the versatility of Cat Skid Steer Loaders and Compact Track Loaders.



Blades

Caterpillar offers a wide variety of blade styles including straight, coal, woodchip, landfill, reclamation and cushion dozer – enhancing the machine's productivity in many different industries and applications. Every Cat Blade is designed to perfectly match the machine's configuration, extending your effective scope of operation.



Bale Grabs and Bale Spears

Bale Grabs safely grab and carry square or round baled material. Bale Spears are ideal for handling hay bales, both round and square as well as other baled material in agricultural applications.



Brooms

Brooms are ideal for sweeping and cleaning dirt, rock, snow and other debris from streets, parking lots, driveways, sidewalks and factory floors. Several sizes and styles are available for Cat Loaders. Water sprinkler kits are available for dust control.



Brushcutters

Brushcutters are ideal for clearing overgrowth from highway medians, utility and pipeline easements and for initial land clearing for housing, parks and recreational areas. The SSL/CTL-based heads can process brush, shrubs, and grasses. Cat® Brushcutters are well suited for high-production brush cutting for land management projects.



Buckets – Excavator

Caterpillar offers a wide variety and many sizes of excavator buckets including: clean-up, digging, ditch cleaning, ditch cleaning tilt, extreme duty, general duty, grading, heavy duty and severe duty. Consult with the experts at our dealership to ensure selection of the most efficient bucket for your machine and application.



Buckets – Loaders

Cat Loader Buckets are designed to load easily and efficiently in all applications. Grading bucket's long, flat floor can scoop material, level or backfill.



Cold Planers

Cold planers are primarily used to economically restore asphalt and concrete surfaces in small residential and commercial paving jobs. They are also ideal for milling imperfections prior to resurfacing and removing deteriorated pavement when the use of dedicated planers is limited. They are designed for use on Cat Skid Steer Loaders, Compact Track and Wheel Loaders and Backhoe Loaders.



Compactors – Drum

Vibratory drum compactors are used for compacting soil, sand and gravel prior to pouring concrete or laying asphalt surfaces. Vibratory action and dynamic force combine to provide excellent compaction in a compact size. This compactor style is designed for use on Cat Skid Steer Loaders, Compact Track and Wheel Loaders.



Compactors – Plate

Vibratory Plate Compactors are used for compacting soil, sand and gravel prior to pouring concrete or laying asphalt surfaces. They are also ideal for asphalt patch work. This compactor style is designed for use on Cat Skid Steer Loaders, Compact Track and Wheel Loaders.



Flail Mowers

Flail mowers are ideal for efficient cutting and mulching of vegetation and overgrowth for both commercial and residential properties.



Forks – Forestry

Several fork types are available for heavy-duty forestry and millyard applications. Logging, millyard, grapple and lumber forks are available for loading and unloading trucks, decking and feeding the mill, plus handling and sorting lumber, logs and palletized materials.



Forks – Pallet

Many pallet fork sizes are available to equip the smallest to largest machines for handling all types of materials. From bulky, palletized material found on most every construction site to bagged fertilizer and seed on landscaping and nursery sites – pallet forks provide some of the best versatility.



Forks – Pipe and Pole

This purpose-built fork is designed for use on wheel loaders in oil and gas field drilling, pipeline construction and utilities work. The two-piece top clamp holds pipe from two to 36 inches in diameter. Clamping surface has rubber contact pads to protect pipe from damage.



Grapples – Contractors

This grapple style is strong and durable, equipping hydraulic excavators for structural demolition, material handling, sorting, loading and unloading rock, scrap, pipe, waste material and other debris. The lower jaw is slightly curved and enables easy loading, more penetration into scrap debris, and unrestricted release of material when unloading.



Grapples – Demolition and Sorting

It's easy for an excavator operator to precisely position this grapple to move scrap and demolition debris with its 360° rotation. Powerful grab force and fast cycle times ensure high productivity when taking down a building or sorting and loading material.



Grapples – Forestry

Forestry grapples for forest machines feature 360° rotation and can be quickly positioned for maximum productivity. Cat Forestry Grapples are built using high-strength steel throughout the body and tines, reinforced in key areas to maintain structural integrity. Available in a wide range of sizes.



Grapples – Orange Peel

Continuous 360° rotation gives material handler operators full control to position the grapple swiftly and precisely in scrap and other materials. A covering guard facilitates easy access to the cylinders, which are housed within the tines for maximum protection. Choose from 4- or 5-tines in range of capacities sized for use with small and medium material handling excavators.



Grapples – Trash

These grapples are wide and feature a 4-over-5 tine jaw construction making them ideal for excavators quickly handling and moving large volumes of municipal solid waste, wood chips, wood debris, and other low-density material.



Grapple Buckets, Forks and Rakes

Grapple buckets, forks and rakes are designed to handle bulky materials. They are built for compact track and skid steer loaders, compact wheel loaders and telehandlers. Utility grapple buckets, forks and rakes handle light materials while industrial grapples are best for heavy-duty usage.



Hammers

Cat Hydraulic Hammers make short work of your demolition, construction, quarry and production breaking needs. A sealed, sound-suppressed housing protects the power cell and significantly reduces sound levels on silenced models. A variety of sizes and tool options make Cat Hammers the ideal choice for concrete demolition, breaking rock and frozen or hard ground, and trenching.



Lift Groups

Balderson Parallel Lift Groups enable Cat® Motor Graders to engage a variety of front-mounted attachments such as plows, V-plows and straight blades, adding to the machine's versatility and on-the-job performance.



Material Handling Arms

These tools equip Cat Loaders and Telehandlers for moving, manipulating and placing pipe, precast concrete structures, small equipment and other similar items with maximum visibility and control. They are well suited for loading, carrying and setting trees and large shrubs in landscaping.



Mulchers

For high performance cutting and mulching of vegetation and undergrowth from typical wooded terrain – this attachment reduces trees, saplings, and shrubs into mulched material. The SSL/CTL-based heads can process trees up to 8" diameter, providing effective solutions for land management projects. These rugged heads can also incorporate the mulch and nutrients into the soil, reducing erosion.



Multi-Processors

A multi-processor equips your excavator for even higher levels of demolition versatility. Consisting of a housing and jaw set (with six jaw options available), it offers the flexibility to choose the right jaw set for cutting and crushing most any material and scrap on demolition jobsites.



Pulverizers

Secondary pulverizers fine crush concrete and concrete blocks resulting from site demolition. Wide jaws with pick-up tips and numerous teeth, a large opening, reversible cutting edges and rapid closing time help reduce the largest amount of onsite concrete in the shortest time.



Quick Couplers

Cat Quick Couplers increase the machine's flexibility and versatility by enabling rapid changeover of work tool attachments—keeping a single machine highly productive. Quick Couplers are available for loaders, excavators and backhoes.



Rakes – Landscape

This rake style uses hardened teeth to pulverize, aerate, level and condition the soil—while collecting and depositing rocks and debris into an integrated hopper bucket for quick removal. These rakes are designed to operate with the loader in reverse, leaving the soil finely groomed with minimal compaction.



Rakes – Loader

Cat Loader Rakes feature fabricated steel teeth for strength and a long service life in land clearing, stump removal, and boulder and large tree moving. Heavy-duty styles with shorter teeth and more robust designs are ideal for working in clay and other heavy soils. Rakes are available with or without a top clamp for wheel and track loaders.



Rakes – Power Box

This one work tool for compact track loaders, wheel loaders and skid steer loaders de-thatches, removes old lawns and weeds; grades, levels, rakes, removes debris; and prepares seedbeds. Angling ability enables the operator to windrow debris for easy pickup and removal.



Rippers

With its powerful, single point of penetration, Cat Rippers are effective at breaking out rock and other difficult materials. Using it with a compatible quick coupler and rock bucket for "rip and load," you can supplement or even eliminate blasting rock prior to truck loading.



Rotors

Caterpillar offers a wide variety of sturdy rotors for reclaimers and milling machines. Designed and built to precisely match the Cat machines they're mounted on, they maximize efficiency, enhance productivity and ensure longer service life.



Saws

Wheeled saws are designed for high performance trench cutting on a variety of hard or compact surfaces like asphalt, reinforced concrete and rocky or frozen ground. They are compatible with compact track loaders, skid steer loaders and compact wheel loaders.



Scarifiers

Scarifiers are designed for a wide variety of ground-preparation applications. These attachments are available for Cat Motor Graders.



Shears

Cat Shears are designed for Cat machines – taking full advantage of the hydraulic flows and pressures to enhance productivity without compromising safety or causing premature wear of the shear and carrier. Mobile scrap and demolition shears can be boom-mounted, or stick mounted with or without a coupler.



Silage Defacers

Cat Silage Defacers are designed to prepare silage and haylage for feed. With high-torque motors, the Cat Silage Defacers face through bunks reliably and ensure minimal oxygen penetration reducing waste.



Snow Blowers

Cat Snow Blowers utilize a two-stage auger and impeller design to move a greater volume of snow quickly and efficiently. Compatible with Compact Track Loaders, Skid Steer Loaders, and Compact Wheel Loaders. Cat Snow Blowers are designed for removing snow from streets, parking lots, driveways and sidewalks.



Snow Plows, Pushes and Wings

Whether on urban, rural or mountain roads, at airports, plant facilities, parking lots or clearing ditches, Cat Snow Plows, Snow Pushes and Snow Wings move snow with maximum efficiency and power. Snow Wings, one-way, reversible, angle and V-plow styles equip your Cat Loaders and Motor Graders for high-volume snow removal.



Stump Grinders

Designed to economically remove stumps in residential, commercial and agricultural settings – Cat Stump Grinders offer increased production compared to tow-behind grinders in situations where multiple stump removals are required. They are compatible with compact track and skid steer loaders, and compact wheel loaders.



Thumbs

Thumbs work in conjunction with excavator buckets, enabling the machine to pick, sort, stack, load and move various materials found on the jobsite. Pro Series Hydraulic Thumbs move and rotate with the bucket through the bucket rotation cycle. Rigid link thumbs are a low-cost, effective solution in which the thumb is manually moved to one of two working positions.



Tillers

Tillers are designed for breaking up and pulverizing soil, mixing compost or other material into existing soil, stabilizing and leveling existing terrain in landscape-finishing applications. Cat Tillers are compatible with compact track loaders, skid steer loaders and compact wheel loaders.



Trenchers

Cat Trenchers are designed for use on compact track loaders, skid steer loaders and compact wheel loaders – enabling these machines to cut narrow straight trenches in soil for laying electrical, telephone and cable lines, and water and gas pipe.



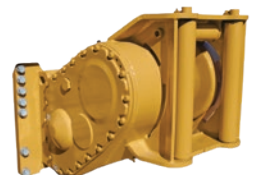
Truss Booms

Truss booms for telehandlers are designed to lift and place items like roof trusses, frames, beams as well as equipment. The truss boom, with its added horizontal and vertical reach, enables operators to place materials and equipment in hard to reach areas.



Winches

Cat Retrieval Winches are built for easy installation on small dozers and are designed to handle various winch applications requiring high line pull and smooth speed modulation. They offer superior versatility and are ideal for dozers used in utility and retrieval type jobs.



CAT® POWER SYSTEMS

Diesel Generator Sets



	MIN RATING	MAX RATING	EMISSIONS
D20	20 ekW	20 ekW	U.S. EPA Cert., Tier 4I
D25	25 ekW	25 ekW	U.S. EPA Cert., Tier 4I
D30	30 ekW	30 ekW	U.S. EPA Cert., Tier 4I
D40 GC	40 ekW	40 ekW	U.S. EPA Cert., Tier 3, SCAQMD Compliant
D50 GC	50 ekW	50 ekW	U.S. EPA Cert., Tier 3, SCAQMD Compliant
D60 GC	60 ekW	60 ekW	U.S. EPA Cert., Tier 3
D80 GC	80 ekW	80 ekW	U.S. EPA Cert., Tier 3
D100 GC	100 ekW	100 ekW	U.S. EPA Cert., Tier 3
C4.4 (60 Hz)	36 ekW	100 ekW	U.S. EPA Cert., Tier 3
D125 GC	125 ekW	125 ekW	U.S. EPA Cert., Tier 3
D150 GC	150 ekW	150 ekW	U.S. EPA Cert., Tier 3
D175 GC	175 ekW	175 ekW	U.S. EPA Cert., Tier 3
D200 GC	200 ekW	200 ekW	U.S. EPA Cert., Tier 3
D800 GC	800 ekW	800 ekW	U.S. EPA Cert., Tier 2
D1000 GC	1000 ekW	1000 ekW	U.S. EPA Cert., Tier 2
D1250 GC	1250 ekW	1250 ekW	U.S. EPA Cert., Tier 2
C7.1 (60 Hz)	114 ekW	200 ekW	EPA Stationary Emergency
D250 GC	250 ekW	250 ekW	EPA Stationary Emergency
D300 GC	300 ekW	300 ekW	EPA Stationary Emergency
C9 (60 Hz)	180 ekW	300 ekW	Tier 3
D350 GC	350 ekW	350 ekW	EPA Stationary Emergency
D400 GC	400 ekW	400 ekW	EPA Stationary Emergency
C13 (60 Hz)	320 ekW	400 ekW	EPA Stationary Emergency
D450 GC	450 ekW	450 ekW	EPA Stationary Emergency
C15 (60 Hz)	320 ekW	500 ekW	Tier 2, Tier 3
D500 GC	500 ekW	500 ekW	EPA Stationary Emergency
C18 (60 Hz)	455 ekW	750 ekW	U.S. EPA Cert., Tier 2
D550 GC	550 ekW	550 ekW	EPA Stationary Emergency
D600 GC	600 ekW	600 ekW	EPA Stationary Emergency
C18 (60 Hz) Tier 4	500 ekW	600 ekW	Low Fuel Consumption
C18 (60 Hz) Tier 4	455 ekW	500 ekW	U.S. EPA Tier 4 Final
C27 (60 Hz)	680 ekW	800 ekW	EPA Stationary Emergency
C32 (60 Hz)	830 ekW	1250 ekW	EPA Stationary Emergency
3512C (60 Hz)	1230 ekW	1750 ekW	EPA Stationary Emergency
3516C (60 Hz)	1650 ekW	2500 ekW	EPA Stationary Emergency
3516C Tier 4 Final (60 Hz)	1650 ekW	2500 ekW	EPA Tier 4 Final
3516E (60 Hz)	2500 ekW	3000 ekW	EPA Stationary Emergency
C175-16 (60 Hz)	2500 ekW	3365 ekW	EPA Stationary Emergency
C175-16 Tier 4 Final (60 Hz)	2500 ekW	3100 ekW	EPA Tier 4 Final
C175-20 (60 Hz)	3150 ekW	4000 ekW	EPA Stationary Emergency



Gas Generator Sets



	MAX RATING	FUEL TYPE	EMISSIONS
DG100	100 ekW	Natural Gas/Propane (Dual Fuel)	U.S. EPA Stationary Emergency
DG125	125 ekW	Natural Gas/Propane (Dual Fuel)	U.S. EPA Stationary Emergency and Non-Emergency
DG150	150 ekW	Natural Gas/Propane (Dual Fuel)	U.S. EPA Stationary Emergency and Non-Emergency
DG175	175 ekW	Natural Gas/Propane (Dual Fuel)	U.S. EPA Stationary Emergency and Non-Emergency
DG200	200 ekW	Natural Gas/Propane (Dual Fuel)	U.S. EPA Stationary Emergency and Non-Emergency
DG350	350 ekW	Natural Gas	EPA Stationary Non-Emergency
DG400	400 ekW	Natural Gas	EPA Stationary Non-Emergency
DG450	450 ekW	Natural Gas	EPA Stationary Non-Emergency
DG500	500 ekW	Natural Gas	EPA Stationary Non-Emergency

	MAX RATING	FUEL TYPE	NATURAL GAS RATING	EMISSIONS
DG175 GC (Single-Phase)	60 ekW	Natural Gas	175	U.S. EPA Certified for Stationary Emergency Application
DG175 GC (3 Phase)	60 ekW	Natural Gas	175	U.S. EPA Certified for Stationary Emergency Application
DG200 GC (Single-Phase)	60 ekW	Natural Gas	200	U.S. EPA Certified for Stationary Emergency Application
DG200 GC (3 Phase)	60 ekW	Natural Gas	200	U.S. EPA Certified for Stationary Emergency Application
DG230 GC (3 Phase)	60 ekW	Natural Gas	230	U.S. EPA Certified for Stationary Emergency Application
DG250 GC (3 Phase)	60 ekW	Natural Gas	250	U.S. EPA Certified for Stationary Emergency Application
DG275 GC (3 Phase)	60 ekW	Natural Gas	275	U.S. EPA Certified for Stationary Emergency Application
DG300 GC (3 Phase)	60 ekW	Natural Gas	300	U.S. EPA Certified for Stationary Emergency Application
DG350 GC (3 Phase)	60 ekW	Natural Gas	350	U.S. EPA Certified for Stationary Emergency Application
DG400 GC (3 Phase)	60 ekW	Natural Gas	400	U.S. EPA Certified for Stationary Emergency Application
DG450 GC (3 Phase)	60 ekW	Natural Gas	450	U.S. EPA Certified for Stationary Emergency Application

Gas Generator Sets (cont.)

	MAX CONTINUOUS RATING	FUEL TYPE	MAX ELECTRICAL EFFICIENCY
G3412 (with Fast Response)	500 ekW @0.8pf	Natural Gas	33.5%
G3412	423 ekW @0.8pf	Natural Gas, Biogas, Field Gas, Propane	37.3%
G3512 (with Fast Response)	750 ekW @0.8pf	Natural Gas	33.8%
G3512 (with Fast Response)	1000 ekW @0.8pf	Natural Gas	35.6%
G3512H	1515 ekW @1.0pf	Natural Gas	44.9%
G3516A	1085 ekW	Natural Gas, Biogas, Coal Gas	36.5%
G3516 (with Fast Response)	1500 ekW @0.8pf	Natural Gas	35.2%
G3516C	1660 ekW	Natural Gas, Lean Coal Mine Methane	37.7%
G3516H	2027 ekW @1.0pf	Natural Gas	45.3%
G3520C	2050 ekW	Natural Gas, Biogas, Coal Gas	40.1%
G3520 (with Fast Response)	2000 ekW @0.8pf	Natural Gas	37.1%
G3520 (with Fast Response)	2500 ekW @0.8pf	Natural Gas	38.5%
G3520H	2500 ekW @1.0pf	Natural Gas	45.3%
CG132B-8	400 ekW @1.0pf	Natural Gas, Biogas, Coal Gas	43.1%/42.1%
CG132B-12	600 ekW @1.0pf	Natural Gas, Biogas	43.3%/42.4%
CG132B-16	800 ekW @1.0pf	Natural Gas, Biogas	43.5%/42.6%
CG132B-16	1000 ekW @1.0pf	Natural Gas	41.0%
CG170-12 K	1125 ekW	Natural Gas	40.7%
CG170-12	1000 ekW @1.0pf	Natural Gas, Biogas	43.0%
CG170-12	1200 ekW @1.0pf	Natural Gas, Biogas, Coal Gas	43.7%/43.0%
CG170-16 K	1500 ekW	Natural Gas	40.8%
CG170-16	1560 ekW @1.0pf	Natural Gas, Biogas, Coal Gas	43.3%/42.7%
CG170B-20	2000 ekW @1.0pf	Natural Gas, Biogas, Coal Gas	44.4% / 43.2%
CG170B-12	1380 ekW @1.0pf	Natural Gas, Biogas, Coal Gas	45%/43.6%
CG170B-16	1840 ekW @1.0pf	Natural Gas, Biogas, Coal Gas	44.7%/43.6%
CG170B-20	2300 ekW @1.0pf	Natural Gas, Biogas, Coal Gas	45%/43.6%
CG260-12	3333/3000 ekW @1.0pf	Natural Gas, Coal Gas	43.9%
CG260-12	4300/4000 ekW @1pf	Natural Gas, Biogas, Coal Gas, Associated Gas, Synthesis Gas	44.1/43.8%
CG260-16	4500/4050 ekW @1pf	Natural Gas	44.6/44.3%

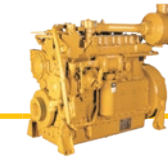


Industrial Diesel Engines

	MAXIMUM POWER		MAXIMUM TORQUE (lb-ft@rpm) (Nm@rpm)		EMISSIONS
C0.5	13.7 hp	10.2 kW	22 @ 1600	30 @ 1600	U.S. EPA Tier 4 Final
C0.7	17.8 hp	13.3 kW	32 @ 2400	44 @ 2400	U.S. EPA Tier 4 Final, EU Stage V
C1.1	24 hp	18.4 kW	63 @ 1600	86 @ 1600	U.S. EPA Tier 4 Final, EU Stage V
C1.5	24.6 hp	18.4 kW	63.4 @ 1800	86 @ 1800	U.S. EPA Tier 4 Final
C1.7	40.2 hp	30 kW	92 @ 1800	125 @ 1800	U.S. EPA & CARB Tier 4 Final
C2.2	67.1 hp	50 kW	153 @ 1800	208 @ 1800	U.S. EPA & CARB Tier 4 Final
C2.2	74 hp	55 kW	199 @ 1600	270 @ 1600	U.S. EPA & CARB Tier 4 Final, EU Stage V
C2.8	74 hp	55 kW	280 @ 1360	380 @ 1360	U.S. EPA & CARB Tier 4 Final, EU Stage V
C3.6	134 hp	100 kW	406 @ 1500	550 @ 1500	U.S. EPA & CARB Tier 4 Final, EU Stage V
C3.6 for Tractors	134 hp	100 kW	391 @ 1500	530 @ 1500	U.S. EPA & CARB Tier 4 Final, EU Stage V
C4.4	200 hp	150 kW	609 @ 1400	825 @ 1400	U.S. EPA & CARB Tier 4 Final, EU Stage V
C4.4	173.5 hp	129.4 kW	553 @ 1400	750 @ 1400	U.S. EPA & CARB Tier 4 Final
C7.1	320 hp	240 kW	935 @ 1400	1268 @ 1400	U.S. EPA & CARB Tier 4 Final, EU Stage V
C9.3B	456 hp	340 kW	1540 @ 1400	2088 @ 1400	U.S. EPA & CARB Tier 4 Final, EU Stage V
C9.3	400 hp	298 kW	1268 @ 1400	1719 @ 1400	U.S. EPA Tier 4 Final
C13B	577 hp	430 kW	1943 @ 1400	2634 @ 1400	EU Stage V
C13	520 hp	388 kW	1756 @ 1400	2381 @ 1400	U.S. EPA Tier 4 Final
C15	580 hp	433 kW	1958 @ 1400	2655 @ 1400	U.S. EPA Tier 4 Final
C18	800 hp	597 kW	2736 @ 1300	3710 @ 1300	EU Stage V
C27	1050 hp	783 kW	3448 @ 1200	4674 @ 1200	U.S. EPA Tier 4 Final
C32	1200 hp	895 kW	4056 @ 1200	5499 @ 1200	U.S. EPA Tier 4 Final
3516E	2100 hp	1566 kW	8275 @ 1200	11220 @ 1200	U.S. EPA & CARB Tier 4 Final, EU Stage V
C0.5	13.7 hp	10.2 kW	22 @ 2000	30 @ 2000	U.S. EPA Tier 4 Interim Equivalent. Non-road engines less than 19 kW (25 hp) are not currently subject to EU emission standards.
C0.7	20.5 hp	15.3 kW	37.1 @ 2400	50.4 @ 2400	U.S. EPA Tier 4 Interim Equivalent. Non-road engines less than 19 kW (25 hp) are not currently subject to EU emission standards.
C1.1	28.2 hp	21 kW	49.4 @ 2400	67 @ 2400	U.S. EPA Tier 4 Interim Equivalent. Non-road engines less than 19 kW (25 hp) are not currently subject to EU emission standards.
C1.5	40.2 hp	30 kW	83 @ 1800	112 @ 1800	U.S. EPA Tier 4 Interim Equivalent
C2.2	66 hp	49.2 kW	153 @ 1800	208 @ 1800	U.S. EPA Tier 4 Interim Equivalent
C2.8	74 hp	55 kW	221 @ 1600	300 @ 1600	UN ECE R96 Stage IIIA, Brazil MAR-1
C3.6	121 hp	90 kW	369 @ 1500	500 @ 1500	UN ECE R96 Stage IIIA, Brazil MAR-1
C3.6 for Tractors	121 hp	90 kW	369 @ 1500	500 @ 1500	UN ECE R96 Stage IIIA, Brazil MAR-1

Industrial Diesel Engines (cont.)

	MAXIMUM POWER		MAXIMUM TORQUE (lb-ft@rpm) (Nm@rpm)		EMISSIONS
3054C	130 hp	97 kW	369 @ 1400	500 @ 1400	U.S. EPA Tier 2 Equivalent, EU Stage II Equivalent
C4.4	111.3 hp	83 kW	308 @ 1400	418 @ 1400	UN ECE R96 Stage IIIA
C4.4	142 hp	106 kW	411.2 @ 1400	558 @ 1400	China Non-road Stage III, Brazil MAR-1, UN ECE R96 Stage IIIA
C7	300 hp	224 kW			China Stage II, U.S. EPA Tier 3 Equivalent, EU Stage IIIA Equivalent
C7.1	217 hp	162 kW	663 @ 1400	900 @ 1400	China Non-road Stage III, UN ECE R96 Stage IIIA
C7.1	275 hp	205 kW	774 @ 1400	1050 @ 1400	China Non-road Stage III, Brazil MAR-1, UN ECE R96 Stage IIIA
C9.3B	416 hp	310 kW	1335 @ 1400	1810 @ 1400	China Non-road Stage III, Brazil MAR-1, UN ECE R96 Stage IIIA
C9	375 hp	280 kW	1230 @ 1400	1668 @ 1400	China Non-road III, U.S. EPA Tier 3 Equivalent, EU Stage IIIA Equivalent
C11	450 hp	336 kW	1517 @ 1400	2056 @ 1400	China Non-road III, U.S. EPA Tier 3 Equivalent, EU Stage IIIA Equivalent
C13	520 hp	388 kW	1634 @ 1400	2215 @ 1400	China Non-road III, U.S. EPA Tier 3 Equivalent or U.S. EPA Tier 2 Equivalent, EU Stage IIIA Equivalent or EU Stage II Equivalent
3406C	465 hp	347 kW	1602 @ 1350	2172 @ 1350	Non-Certified
C15	595 hp	444 kW	2004 @ 1400	2717 @ 1400	China Non-road III, U.S. EPA Tier 3 Equivalent, EU Stage IIIA Equivalent
C18	800 hp	597 kW	2696 @ 1400	3655 @ 1400	China Non-road III, U.S. EPA Tier 3 Equivalent or U.S. EPA Tier 2 Equivalent, EU Stage IIIA Equivalent, or Non-certified
C27	1150 hp	858 kW	3876 @ 1400	5255 @ 1400	U.S. EPA Tier 2 Equivalent
C32	1350 hp	1007 kW	4548 @ 1400	6166 @ 1400	U.S. EPA Tier 2 Equivalent
3508	1000 hp	746 kW	3144 @ 1450	4263 @ 1450	Non-Certified
3508B	1100 hp	820 kW	3211 @ 1450	4353 @ 1450	Non-Certified
3512	1500 hp	1119 kW	4580 @ 1400	6210 @ 1400	Non-Certified
3512B	1650 hp	1231 kW	5296 @ 1450	7180 @ 1450	Non-Certified
3512C	1500 hp	1120 kW	5259 @ 1500	7130 @ 1500	U.S. EPA Tier 2 Equivalent
3516	2000 hp	1492 kW	6189 @ 1400	8391 @ 1400	Non-Certified
3516B	2200 hp	1640 kW			Non-Certified
3516C	2100 hp	1506 kW	7563 @ 1300	10254 @ 1300	U.S. EPA Tier 2 Non-road Equivalent Emission Standards (Not Currently EPA Certified)



Gas Compression Engines

	MIN RATING		MAX RATING		EMISSIONS
G3520J	1725 bhp	1286 bkW	95 bhp	71 bkW	U.S. EPA Spark Ignited Stationary NSPS Emissions for 2010
G3304B	95 bhp	71 bkW	95 bhp	71 bkW	NSPS 2010
G3306B	145 bhp	108 bkW	211 bhp	157 bkW	NSPS 2010
G3406	215 bhp	160 bkW	325 bhp	242 bkW	NSPS Site Compliant Capable
G3408	255 bhp	190 bkW	400 bhp	298 bkW	NSPS Site Compliant Capable or Non-regulated
G3408C	425 bhp	317 bkW	425 bhp	317 bkW	NSPS Site Compliant Capable or Non-regulated
G3412	600 bhp	448 bkW	600 bhp	447 bkW	Non-regulated areas
G3412C	637 bhp	475 bkW	637 bhp	475 bkW	NSPS Site Compliant Capable
CG137-8	400 bhp	298 bkW	400 bhp	298 bkW	NSPS Site Compliant Capable
CG137-12	600 bhp	447 bkW	600 bhp	447 bkW	NSPS 2010
G3508 LE	524 bhp	391 bkW	670 bhp	500 bkW	NSPS Site Compliant Capable or Non-regulated
G3512 TA	790 bhp	589 bkW	1004 bhp	749 bkW	NSPS Site Compliant Capable
G3516 NA	660 bhp	492 bkW	1340 bhp	1000 bkW	NSPS Site Compliant Capable
G3516J	1380 bhp	1029 bkW	1380 bhp	1029 bkW	U.S. EPA Spark Ignited Stationary NSPS Emissions
G3606 A4	1875 bhp	1398 bkW	2010 bhp	1499 bkW	NSPS Site Compliant Capable
G3608 A4	2500 bhp	1864 bkW	2675 bhp	1995 bkW	NSPS Site Compliant Capable
G3612 A4	3750 bhp	2796 bkW	4000 bhp	2983 bkW	NSPS Site Compliant Capable
G3616 A4	5000 bhp	3729 bkW	5350 bhp	3990 bkW	NSPS Site Compliant Capable
G3516 TA	660 bhp	492 bkW	1380 bhp	1029 bkW	NSPS Site Compliant Capable



Electric Power Renewable Hybrid Solutions

Inverter Options - UL Listed

OUTPUT	VOLTAGE	FREQUENCY
3 kW	208V - 240V, 1 Phase	60 HZ
3.8 kW	208V - 240V, 1 Phase	60 HZ
5 kW	208V - 240V, 1 Phase	60 HZ
6 kW	208V - 240V, 1 Phase	60 HZ
7 kW	208V - 240V, 1 Phase	60 HZ
7.7 kW	208V - 240V, 1 Phase	60 HZ
33.3 kW	480V, 3 Phase	60 HZ
50 kW	480V, 3 Phase	60 HZ
62.5 kW	480V, 3 Phase	60 HZ
125 kW	480V, 3 Phase	60 HZ
150 kW	480V, 3 Phase	60 HZ

Note 1: Inverter Products are not Cat branded.
Note 2: Check with our dealership for product availability which varies by region and delivery date.



Weather Stations

Weather Stations provide a pre-engineered system that cost-effectively scales to Microgrid Solution size and complexity. The Weather station delivers best-practice PV performance tracking and correlation technology.

BASIC FEATURES	CLASS A	CLASS B	CLASS C
Plane of Array	•	•	•
Back of Module Temperature	•	•	•
Air Temperature	•	•	•
Relative Humidity	•	•	–
Wind Speed	•	•	–
Wind Direction	•	•	–
Barometric Pressure	•	•	–
Global Horizontal Irradiance	•	–	–



Mobile Generator Sets

Rental Generator Sets



MODEL	RATING
XQP30	30 kVa
XQ35	35 kVa
XQ60	60 kVa
XQP60	60 kVa
XQP100	100 kVa
XQ125	125 kVa
XG135	170 kVa
XQP150	150 kVa
XQ230	228 kVa
XQP275	275 kVa
XQP300	300 kVa
XG400	500 kVa
XQ425	425 kVa
XQP500	500 kVa
XQ570	568 kVa
XQP1100	1100 kVa
XQC1200	1438 kVa
XQ1475G	1844 kVa
XQC1600	1893 kVa



Electrical Systems

Uninterruptible Power Supply

Cat® Flywheel UPS	
UPS 300	300 kVA
UPS 600G	300 kVA - 600 kVA
UPS 750	300 kVA - 1200 kVA
UPS 1200Z	300 kVA 1200 kVA

Paralleling Switchgear

Fully Customizable
Modularization Capable
Breaker Based – 208V to 38 kV
Human Machine Interface (HMI) Controls
Typical Applications:
Emergency Standby
Utility Paralleling
Load Management

Electrical Systems (50 Hz)

Multi-Generator Paralleling Controls

Engine Paralleling and Integration Control
Integration Controls
Generator Set Paralleling Controls (External Circuit Breaker)
On-Package Genset Paralleling Controls
Field Expandable
Typical Applications:
Emergency Standby
Utility Paralleling
Load Management

Automatic Transfer Switch (ATS)

Molded Case
UL-ANSI Type
600 V Class
30 A - 1600 A
Open Transition
Closed Transition
Delayed Transition
Bypass Isolation

Power Breaker

Features:
UL-ANSI Type
600 V Class
200 A - 5000 A
Open Transition
Closed Transition
Delayed Transition
Bypass Isolation



Electrical Systems (60 Hz)

Uninterruptible Power Supply (UPS)

Uninterruptible Power Supply	480 V
Flywheel Standalone System (SMS and MMS)	300 kVA - 1200 kVA
Flywheel Parallel System	300 kVA - 8400 kVA
Double Conversion Stand Alone System	40 kVA - 225 kVA
Double Conversion Parallel System	40 kVA 800 kVA

Paralleling Switchgear

Fully Customizable
Modularization Capable
Breaker Based – 220V to 38 kV
Human Machine Interface (HMI) Controls
Typical Applications:
Emergency Standby
Utility Paralleling
Load Management

Engine Transfer Load Manager (EXL)

Integration Controls
Generator Set Paralleling Controls (External Circuit Breaker)
Human Machine Interface (HMI) Controls
Typical Applications:
Utility Import and Export
Base Load Operations
Peak Shaving
Emergency Standby

Multi-Generator Paralleling Controls

Engine Paralleling and Integration Control
Integration Controls
Generator Set Paralleling Controls (External Circuit Breaker)
On-Package Genset Paralleling Controls
Field Expandable
Typical Applications:
Emergency Standby
Utility Paralleling
Load Management

Automatic Transfer Switch (ATS)

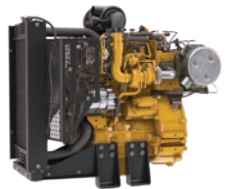
Features:
Molded Case
600 V Class
30 A - 4000 A
Open Transition
Closed Transition
Delayed Transition
Bypass Isolation

Power Breaker

Features:
600 V Class
200 A - 5000 A
Open Transition
Closed Transition
Delayed Transition
Bypass Isolation

Industrial Power Systems¹

Industrial Engines - Diesel

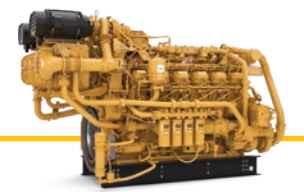
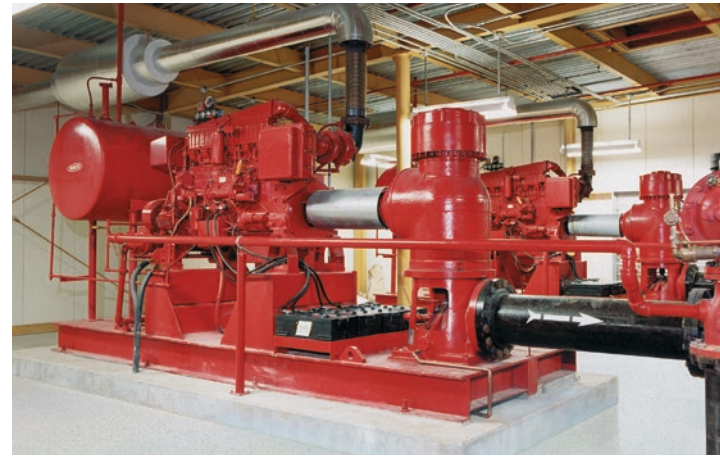


MODEL	HP	MODEL (cont.)	HP
C0.5	11-13.7 hp	C4.4	142 hp
C0.7	11.8-17.8 hp	C7	300 hp
C1.1	19.7-28 hp	C7.1	217 hp
C1.5	25-40 hp	C7.1	275 hp
C1.7	24-48 hp	C9.3B	416 hp
C2.2	42-74 hp	C9	375 hp
C2.8	67-74 hp	C11	450 hp
C3.6	74-134 hp	C13	520 hp
C4.4	99-200 hp	3406C	361-465 hp
C7.1	150-320 hp	C15	595 hp
C9.3B	308-456 hp	C18	800 hp
C9.3	400 hp	C27	1150 hp
C13B	456-577 hp	C32	1350 hp
C13	380-520 hp	3412	624-724 hp
C15	415-595 hp	3508	630-1000 hp
C18	575-800 hp	3508B	1000-1100 hp
C27	800-050 hp	3512	1020-1500 hp
C32	95-1200 hp	3512B	1500-1650 hp
3516E	2100 hp	3512C	1500 hp
C0.5	13.7 hp	3516	1356-2000 hp
C0.7	20.5 hp	3516B	2200 hp
C1.1	28.2 hp	3516C	2100 hp
C1.5	40.2 hp	3516E	2100 hp
C2.2	66 hp	3606	1988-2883 hp
C2.8	74 hp	3608	2800-2634 hp
C3.6	121 hp	3612	3983-5702 hp
3054C	75-130 hp	3616	5431-7644 hp
C4.4	111.3 hp		

Industrial Power Units - Diesel

MODEL	HP	MODEL (cont.)	HP
C3.4B	74 hp	C32	857-1000 hp
C3.4B	115 hp	C4.4	108.6 hp
C4.4	100-188 hp	C4.4	129.4 hp
C7.1	150-320 hp	C7.1	275 hp
C9.3B	308-456 hp	C9	350 hp
C9.3	400 hp	C9	350 hp
C13	385-520 hp	C11	385 hp
C13B	456-577 hp	C13	440 hp
C15	475-595 hp	C15	540 hp
C18	575-630 hp	C18	630 hp
C27	800-876 hp	3516C	2100 hp

¹Includes ratings for both highly regulated and lesser or non-regulated territories, unless noted otherwise.



Fire Pumps

Diesel

MODEL	HP
C18 Acert	600-800 hp
3406C ¹	292-482 hp
3412C ¹	638-739 hp
3508 ¹	950-1065 hp
3512 ¹	1430-1600 hp
3516 ¹	1900-1985 hp

¹For use in lesser regulated territories.

Oil & Gas Products

Gas Compression Engines

MODEL	BHP
G3520J	17250 bhp
G3304B	950 bhp
G3306B	108-1570 bhp
G3406	215-3250 bhp
G3408 ¹	255-4000 bhp
G3408C ¹	4250 bhp
G3412 ¹	6000 bhp
G3412C	6370 bhp
CG137-8	4000 bhp
CG137-12	6000 bhp
G3508 LE ¹	524-6700 bhp
G3508B	6900 bhp
G3512TA	790-10040 bhp
G3512B	10350 bhp
G3516NA	660-13400 bhp
G3516B	13800 bhp
G3516J	13800 bhp
G3520B	1480-17250 bhp
G3606A4	1875-20100 bhp
G3608A4	2500-26750 bhp
G3612 A4	3750-40000 bhp
G3616A4	5000-53500 bhp
G12CM34 Gas	61350 bhp
G16CM34 Gas	81800 bhp
G3516TA	13800 bhp

¹For use in lesser regulated territories.

Oil & Gas Products

Land Electric - Drive Engines

MODEL	BHP
3512E Tier 4	1750 bhp

Land Electric - Drive Modules

MODEL	ekW
3508	610 ekW
3508B	835 ekW
3512	665-1035 ekW
3512B	1045-1245 ekW
3512C	1045 ekW
3512C HD	1245 ekW
3512C with DBG	SR48 Generator
3516	1245 ekW
3516B	SR48 Generator
G3516B	1320 ekW
C18 Tier 4	Displacement 1106.36 in ³

Land Mechanical Engines

MODEL	ekW
C15 ACERT Tier 3	440-595 ekW
C15 ACERT Tier 4i	475-580 ekW
C18 ACERT Tier 3	575-800 ekW
C18 ACERT Tier 4 Final	755-800 ekW
C18 ACERT Tier 4i	600-755 ekW
C27 ACERT Tier 2	800-1150 ekW
C27 ACERT Tier 4 Final	800-950 ekW
C32 ACERT Tier 2	800-1500 ekW
C32 ACERT Tier 4 Final	1125 ekW
3508	680-1135 ekW
3508B	760-900 ekW
3508C	900 ekW
3512	1020-1800 ekW
3512C	1250-1475 ekW
3516	1649 ekW

Land Generator Sets - Diesel

MODEL	kVA
C15 Acert Tier 2	365-570 kVA
C15 Acert Tier 4i	450 kVA
C18 Acert Tier 2	550-680 kVA
C27 Acert Tier 4i	1035 kVA
C27 Acert Tier 2	907-1035 kVA
C32 Acert Tier 2	1000-1300 kVA

Oil & Gas Products (cont.)

Land Generator Sets - Multiple Fuels

MODEL	kVA
3516B with Dynamic Gas Blending	2000 kVA
CG137-12	500 kVA
G3306B	138-170 kVA

Offshore Generator Sets

MODEL	kVA
3500 Family	738-2625 kVA
C175C Family	2619-3325 kVA
C280 Family	2076-7857 kVA
CM20C Family	1230-2050 kVA
8CM20C Family	1640-1830 kVA
9CM20C Family	4023-3600 kVA
6CM25C Family	2400 kVA
8CM25C Family	3200 kVA
9CM25C Family	3600 kVA
C280-6	2320-2722 kVA
C280-8	3084-3634 kVA
C280-12	4640-5444 kVA
C280-16 FMT	7510-7684 kVA
6CM32C	3630 kVA
6CM32E	3630 kVA
8CM32C	4850 kVA
9CM32C	5460 kVA
12CM32C	5460 kVA
16CM32C	5460 kVA
12CM43C	14550 kVA
16CM43C	19400 kVA
6CM34DF	3600 kVA
8CM34DF	4800 kVA
6CM46DF	7020 kVA
7CM46DF	7640-8190 kVA
8CM46DF	8730-9360 kVA
12CM46DF	14040 kVA
16CM46DF	18720 kVA

HazPak

MODEL	BHP	BKW
C2.2 NA	27-410 bhp	20-30 bkW
C4.4 NA	57-650 bhp	43-49 bkW
C4.4 TA	130-1510 bhp	97-112 bkW
C7	2110 bhp	158 bkW
C9	3040 bhp	227 bkW
C15	5040 bhp	376 bkW
C18	715-803 bhp	533-599 bkW
3406C	490 bhp	365 bkW

Well Service Engines

MODEL	POWER BHP	WEIGHT lb-ft	GEAR RATIO
WS255	2500 bhp	16000 lb-ft	6.353:1
WS273 XD	2700 bhp	18000 lb-ft	5.55:1
WS305 XD	3000 bhp	24000 lb-ft	5.55:1



Well Service Pumps

MODEL	BHP
C7 ACERT Water-cooled Manifold	205-275 bhp
C7 ACERT Dry Manifold	225-300 bhp
C7 ACERT Hazardous Location	205-275 bhp
C9 ACERT Water-cooled Manifold	325-40 bhp
C9 ACERT Dry Manifold	275-375 bhp
C9 ACERT Hazardous Location	340 bhp
C9.3 ACERT Tier 4i	300-350 bhp
C9.3 ACERT Tier 4 Final	300-400 bhp
C11 ACERT Dry Manifold	325-450 bhp
C13 ACERT Dry Manifold	385-520 bhp
C13 ACERT Tier 4i	385-520 bhp
C13 ACERT Tier 4 Final	385-520 bhp
C15 ACERT Water-cooled Manifold	536-540 bhp
C15 ACERT Dry Manifold	440-595 bhp
C15 ACERT Hazardous Location	536 bhp
C15 ACERT Tier 4i	475-580 bhp
C18 ACERT Dry Manifold	575-800 bhp
C18 ACERT Tier 4i	600-755 bhp
C18 ACERT Tier 4 Final	755-800 bhp
C27 ACERT Tier 4 Final	800-950 bhp
C27 ACERT Dry Manifold	800-1050 bhp
C32 ACERT Hazardous Location	800-1110 bhp
C32 ACERT Tier 4 Final	1125 bhp
C32 ACERT Water-cooled Manifold	800-1225 bhp
C32 ACERT Dry Manifold	800-1500 bhp
3512B Well Stimulation	2000-2250 bhp
3512C DGB	2150-2500 bhp
3512C	2250-2500 bhp
3512C HD Offshore	2250-2500 bhp
3512E DGB Tier 4 Final	2250-2500 bhp
3516C HD	3070-3300 bhp
3512E Tier 4 Final	2250-2500 bhp

Transmissions

MODEL	POWER BHP	TORQUE lb-ft	WEIGHT lb
CX31-P600	600 bhp	2025 lb-ft	456 lb
CX35-P800	800 bhp	2700 lb-ft	651 lb
TH48-E70	1200 bhp	4422 lb-ft	3735 lb
TH48-E80	2300 bhp	6656 lb-ft	4878 lb
CX48-P2300	2300 bhp	6656 lb-ft	3530 lb
TH55-E70	3300 bhp	9350 lb-ft	6330 lb
TH55-E90	3300 bhp	9350 lb-ft	6330 lb



Marine Engines

MODEL	Propulsion Rating BHP	Generator Set Rating kW
C1.5	–	10-12 kW
C2.2	–	15-25 kW
C4.4	–	36-118 kW
C7.1	280-500 bhp	92-200 kW
C8.7	641 bhp	–
C9.3	375-476 bhp	180-300 kW
C12	340-705 bhp	–
C12.9	838-985 bhp	–
C18	454-1136 bhp	260-565 kW
C32	660-1900 bhp	525-940 kW
C32B	2000-2400 bhp	–
3512C	1280-2551 bhp	1290-1700 kW
3512E	1341-2549 bhp	1200-1700 kW
3516C	2000-3386 bhp	1630-2250 kW
3516E	2501-3500 bhp	1630-2250 kW
C280-6	2320-2722 bhp	1650-1940 kW
C280-8	3084-3634 bhp	2200-2600 kW
C280-12	4640-5444 bhp	3300-3880 kW
C280-16	6169-8076 bhp	4400-5200 kW

Berg Marine Drives

Z-Drives

MODEL	Propulsion Rating Max BHP	Propulsion Rating Max BKW
MTA 3	1450 bhp	1081 bkW
MTA 4	2012 bhp	1500 bkW
MTA 5	2682 bhp	2000 bkW
MTA 6	3500 bhp	2610 bkW
MTA 7	4022 bhp	3000 bkW
MTA 8	5015 bhp	3740 bkW



L-Drives

MODEL	Propulsion Rating Max BHP	Propulsion Rating Max BKW
MTA 1	811 bhp	605 bkW
MTA 2	1033 bhp	770 bkW
MTA 3	1450 bhp	1081 bkW
MTA 4	2012 bhp	1500 bkW
MTA 5	2682 bhp	2000 bkW
MTA 6	3500 bhp	2610 bkW
MTA 7	4022 bhp	3000 bkW
MTA 8	5015 bhp	3740 bkW



Tunnel Thrusters

MODEL	Propulsion Rating Max BHP	Propulsion Rating Max BKW
MTT 1	986 bhp	735 bkW
MTT 2	1227 bhp	915 bkW
MTT 3	1489 bhp	1110 bkW
MTT 4	2032 bhp	1515 bkW
MTT 5	2655 bhp	1980 bkW
MTT 6	3218 bhp	2400 bkW
MTT 7	3829 bhp	2855 bkW
MTT 8	5558 bhp	4145 bkW



CP Propellers

MODEL	Propulsion Rating BHP	Propulsion Rating kW
MPP	470-40,230 bhp	350-30,000 kW



WE ARE HERE FOR YOU

Thompson Tractor puts you in the right equipment to get your job done.
LET'S GET YOU IN A CAT®



You have a job to do; we have the equipment you require. Whether you need to rent or buy, we've got it. Our comprehensive inventory of equipment ensures you have the solution for your job site.

CONTACT YOUR NEAREST THOMPSON TRACTOR LOCATION FOR DETAILS.

ALABASTER (Shelby County)
(205) 664-4833

DECATUR
(256) 353-7721

MONTGOMERY
(334) 215-5000

PENSACOLA
(850) 471-6700

ATTALA/GADSDEN
(256) 570-1100

DOTHAN
(334) 671-1040

OPELIKA/AUBURN
(334) 749-3359

THOMASVILLE
(334) 636-0420

BIRMINGHAM
(205) 841-8601

HUNTSVILLE
(256) 532-1776

OXFORD/ANNISTON
(256) 831-4104

TUSCALOOSA
(205) 247-2800

CRESTVIEW
(850) 682-6510

MOBILE
(251) 626-5100

PANAMA CITY
(850) 785-4007

TUSCUMBIA
(256) 381-2771

Thompson 

thompsontractor.com